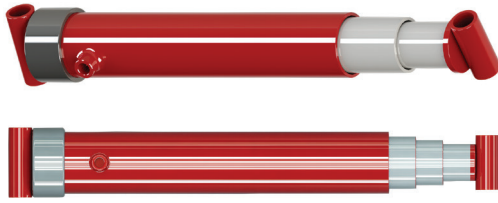
The background of the entire page is a photograph of a tractor with a hydraulic lift attachment, working in a field of tall crops. The image is overlaid with a semi-transparent red filter. The tractor is positioned in the center-left, and its lift arm is extended upwards. The field is filled with tall, golden-brown stalks, likely corn or a similar crop, reaching up to the tractor's height. The sky is a pale, hazy blue, suggesting a clear day. The overall scene conveys a sense of active agricultural work.

**HYDRAULIC LIFT
MANUFACTURING AND
TRAKTOR SPARE PARTS**

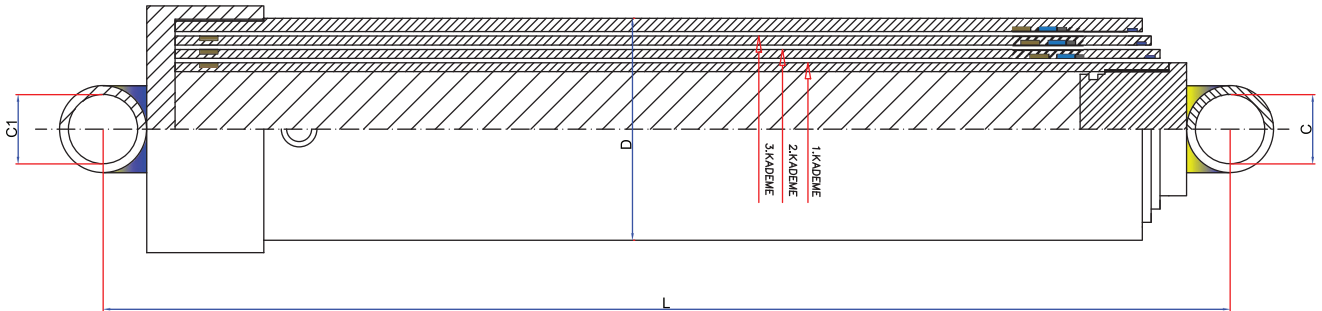
SAR-200

TELESCOPIC CYLINDER

A
model



B
model



TECHNICAL SPECIFICATIONS

Stock Code	Level	Closed Height L - (cm)	Capacity (Ton)	Stroke (mm)	Rakor	45 (mm)	60 (mm)	75 (mm)	90 (mm)	105 (mm)	125 (mm)	145 (mm)	170 (mm)
SAR-200	2	43	2	750	5/8	*	*	*					
SAR-201	2	50	2	890	5/8	*	*	*					
SAR-202	2	64	5	920	5/8			*	*	*			
SAR-203	2	74	5	1120	5/8			*	*	*			
SAR-204	2	80	5	1240	5/8			*	*	*			
SAR-205	2	90	5	1440	5/8			*	*	*			
SAR-206	2	100	5	1640	5/8			*	*	*			
SAR-300	3	64	5	1380	5/8		*	*	*	*			
SAR-301	3	74	5	1680	5/8		*	*	*	*			
SAR-302	3	80	5	1860	5/8		*	*	*	*			
SAR-303	3	90	5	2160	5/8		*	*	*	*			
SAR-304	3	100	5	2460	5/8		*	*	*	*			
SAR-305	3	64	10	1380	3/4			*	*	*	*		
SAR-306	3	74	10	1680	3/4			*	*	*	*		
SAR-307	3	80	10	1860	3/4			*	*	*	*		
SAR-308	3	85	10	2010	3/4			*	*	*	*		
SAR-309	3	90	10	2160	3/4			*	*	*	*		
SAR-310	3	100	10	2460	3/4			*	*	*	*		
SAR-311	3	64	15	1380	3/4				*	*	*	*	
SAR-312	3	74	15	1680	3/4				*	*	*	*	
SAR-313	3	80	15	1860	3/4				*	*	*	*	
SAR-314	3	85	15	2010	3/4				*	*	*	*	
SAR-315	3	90	15	2160	3/4				*	*	*	*	
SAR-316	3	100	15	2460	3/4				*	*	*	*	

TELESCOPIC CYLINDER

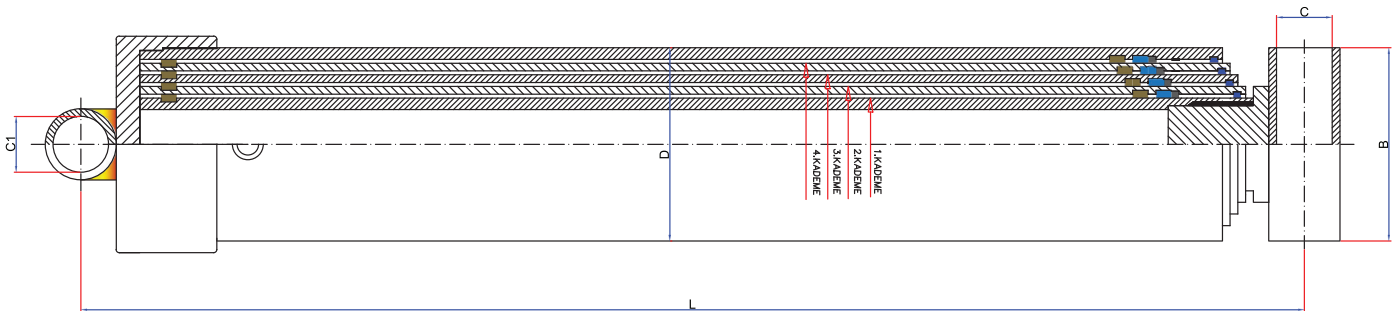
SAR-400



A
model



B
model



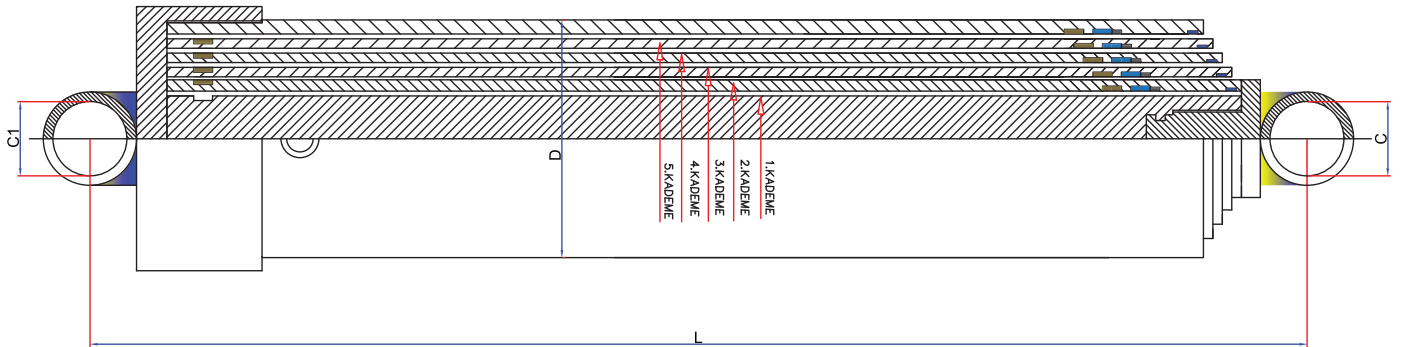
TECHNICAL SPECIFICATIONS													
Stock Code	Level	Closed Height L - (cm)	Capacity (Ton)	Stroke (mm)	Rakor	45 (mm)	60 (mm)	75 (mm)	90 (mm)	105 (mm)	125 (mm)	145 (mm)	170 (mm)
SAR-400	4	64	10	1855	3/4		*	*	*	*	*		
SAR-401	4	74	10	2255	3/4		*	*	*	*	*		
SAR-402	4	80	10	2495	3/4		*	*	*	*	*		
SAR-403	4	85	10	2695	3/4		*	*	*	*	*		
SAR-404	4	90	10	2895	3/4		*	*	*	*	*		
SAR-405	4	100	10	3295	3/4			*	*	*	*	*	
SAR-406	4	64	15	1855	3/4			*	*	*	*	*	
SAR-407	4	74	15	2255	3/4			*	*	*	*	*	
SAR-408	4	80	15	2495	3/4			*	*	*	*	*	
SAR-409	4	85	15	2695	3/4			*	*	*	*	*	
SAR-410	4	90	15	2869	3/4			*	*	*	*	*	
SAR-411	4	100	15	3295	3/4			*	*	*	*	*	
SAR-412	4	64	20	1855	3/4				*	*	*	*	*
SAR-413	4	74	20	2255	3/4				*	*	*	*	*
SAR-414	4	80	20	2495	3/4				*	*	*	*	*
SAR-415	4	85	20	2695	3/4				*	*	*	*	*
SAR-416	4	90	20	2895	3/4				*	*	*	*	*
SAR-417	4	100	20	3295	3/4				*	*	*	*	*



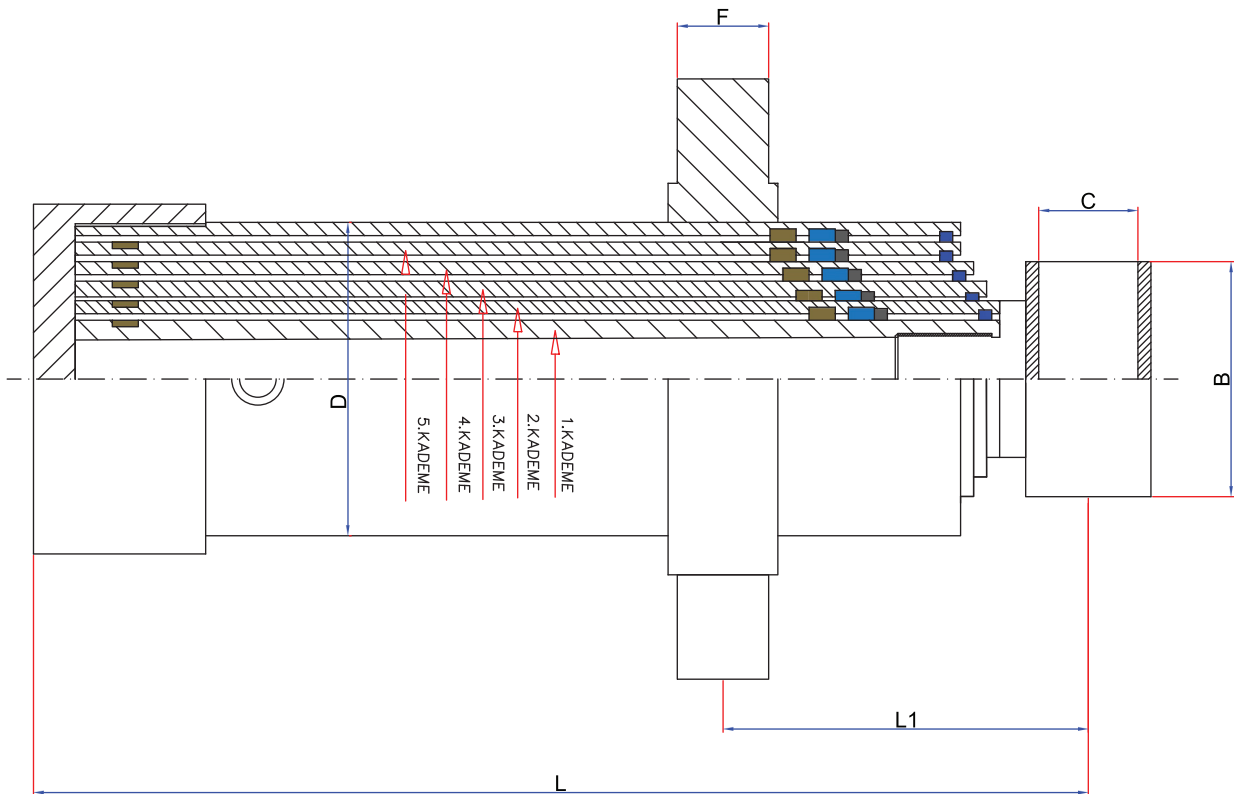
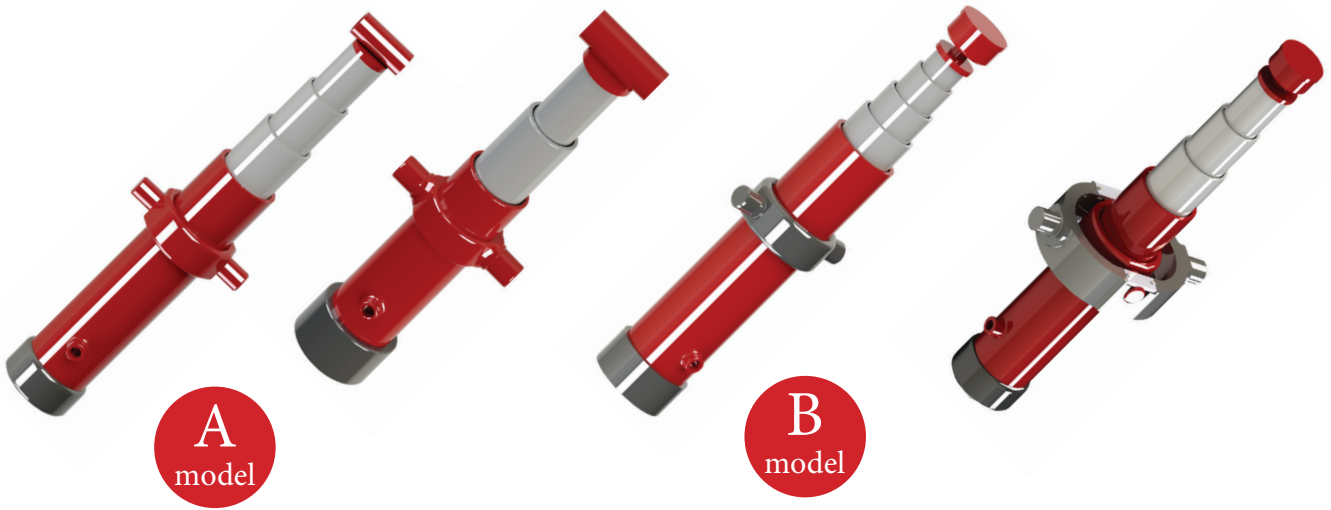
A
model



B
model



TECHNICAL SPECIFICATIONS													
Stock Code	Level	Closed Height L - (cm)	Capacity (Ton)	Stroke (mm)	Rakor	45 (mm)	60 (mm)	75 (mm)	90 (mm)	105 (mm)	125 (mm)	145 (mm)	170 (mm)
SAR-500	5	64	10	2310	3/4	*	*	*	*	*	*		
SAR-501	5	74	10	2810	3/4	*	*	*	*	*	*		
SAR-502	5	80	10	3110	3/4	*	*	*	*	*	*		
SAR-503	5	85	10	3360	3/4	*	*	*	*	*	*		
SAR-504	5	90	10	3610	3/4	*	*	*	*	*	*		
SAR-505	5	100	10	4110	3/4	*	*	*	*	*	*		
SAR-506	5	64	15	2310	3/4		*	*	*	*	*	*	
SAR-507	5	74	15	2810	3/4		*	*	*	*	*	*	
SAR-508	5	80	15	3110	3/4		*	*	*	*	*	*	
SAR-509	5	85	15	3360	3/4		*	*	*	*	*	*	
SAR-510	5	90	15	3610	3/4		*	*	*	*	*	*	
SAR-511	5	100	15	4110	3/4		*	*	*	*	*	*	
SAR-512	5	64	20	2310	3/4			*	*	*	*	*	*
SAR-513	5	74	20	2810	3/4			*	*	*	*	*	*
SAR-514	5	80	20	3110	3/4			*	*	*	*	*	*
SAR-515	5	85	20	3360	3/4			*	*	*	*	*	*
SAR-516	5	90	20	3610	3/4			*	*	*	*	*	*
SAR-517	5	100	20	4110	3/4			*	*	*	*	*	*

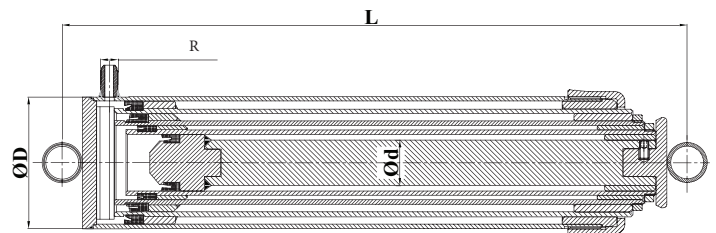


TECHNICAL SPECIFICATIONS													
Stock Code	Level	Closed Height L - (cm)	Capacity (Ton)	Stroke (mm)	Rakor	45 (mm)	60 (mm)	75 (mm)	90 (mm)	105 (mm)	125 (mm)	145 (mm)	170 (mm)
SAR-207	2	38	3	465	5/8		*	*	*				
SAR-208	2	38	5	465	5/8			*	*	*			
SAR-317	3	64	10	1380	3/4			*	*	*	*		
SAR-318	3	64	15	1380	3/4				*	*	*	*	
SAR-418	4	64	10	1855	3/4		*	*	*	*	*		
SAR-419	4	64	15	1855	3/4			*	*	*	*	*	
SAR-518	5	64	10	2310	3/4	*	*	*	*	*	*		
SAR-519	5	64	15	2310	3/4		*	*	*	*	*	*	

SAR-7000

BOTTOM FELTED CYLINDER

TECHNICAL SPECIFICATIONS				
Stock Code	Level	Closed Height L - (cm)	Capacity (Ton)	Rakor (R)
SAR-7000	2	64	5	5/8
SAR-7001	2	74	5	5/8
SAR-7003	3	64 TIGHT	5	5/8
SAR-7004	3	74 TIGHT	5	5/8
SAR-7005	3	64 LARGE	10	3/4
SAR-7006	3	80 LARGE	10	3/4
SAR-7007	4	64 LARGE	10	3/4
SAR-7008	4	80 LARGE	10	3/4
SAR-7009	3	64 LARGE JOINT	10	3/4
SAR-7010	4	64 LARGE JOINT	10	3/4
SAR-7011	2	RIGHT LEFT DUMPING	5	5/8



TECHNICAL SPECIFICATIONS	
Stock Code	Product Type
SAR-523	TELECOPICTRAILER LIFT REPAIR KIT



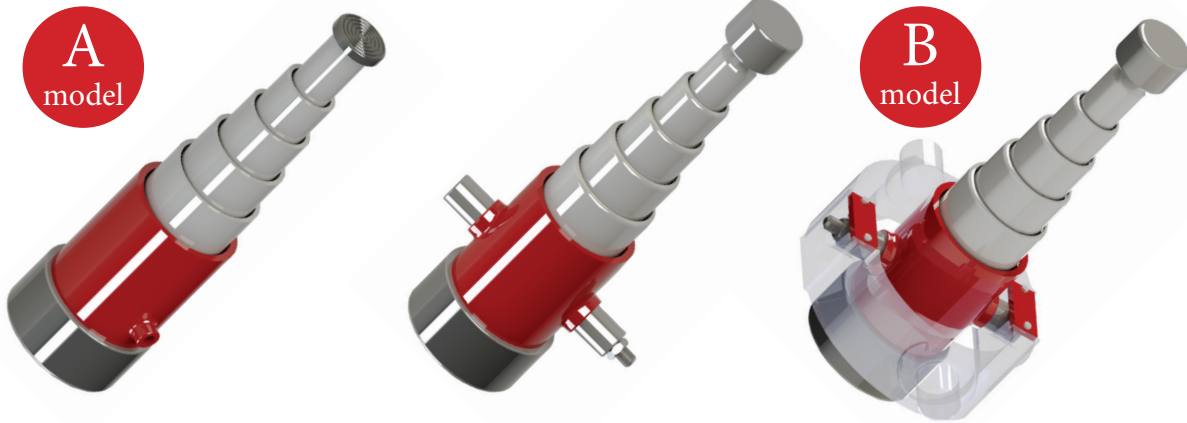
TECHNICAL SPECIFICATIONS		
Stock Code	Level	Closed Height L - (cm)
SAR-7200	2	FELT
SAR-7201	3	FELT TIGHT
SAR-7202	3	FELT LARGE
SAR-7203	4	FELT LARGE

TELESCOPIC CYLINDER



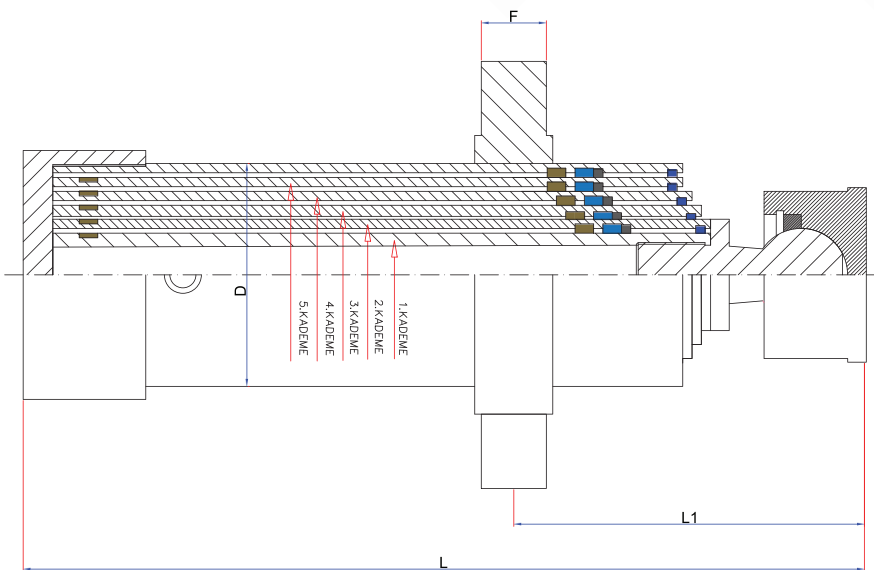
SAR-520

TELESCOPIC CYLINDER



A
model

B
model



TECHNICAL SPECIFICATIONS

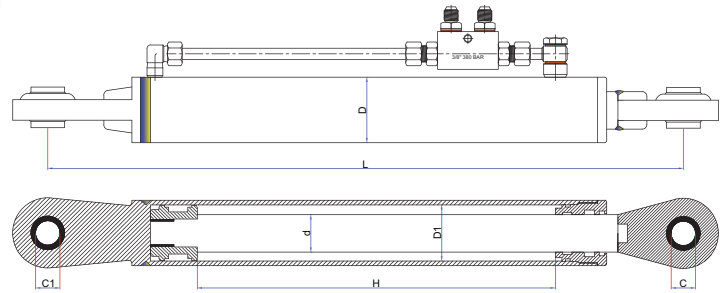
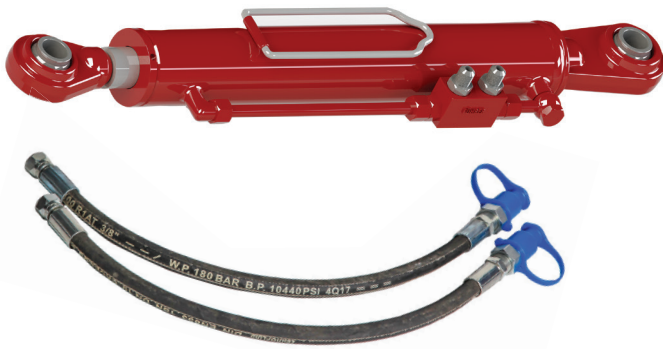
Stock Code	Product Type	Level	Closed Height L - (cm)	Capacity (Ton)	Stroke (mm)	Rakor	45 (mm)	60 (mm)	75 (mm)	90 (mm)	105 (mm)	125 (mm)
SAR-520	3 WAY DUMPING	5	245	10	450	3/4	*	*	*	*	*	*
SAR-521	KRIKO	5	310	10	450	3/4	*	*	*	*	*	*

SAR-319



TECHNICAL SPECIFICATIONS

Stock Code	Product Type	Level
SAR-319	3 WAY DUMPING JOINT	5
SAR-420	3 WAY DUMPING JOINT	10
SAR-522	3 WAY DUMPING JOINT	15
SAR-832	SIDE LINK JOINT	7,5

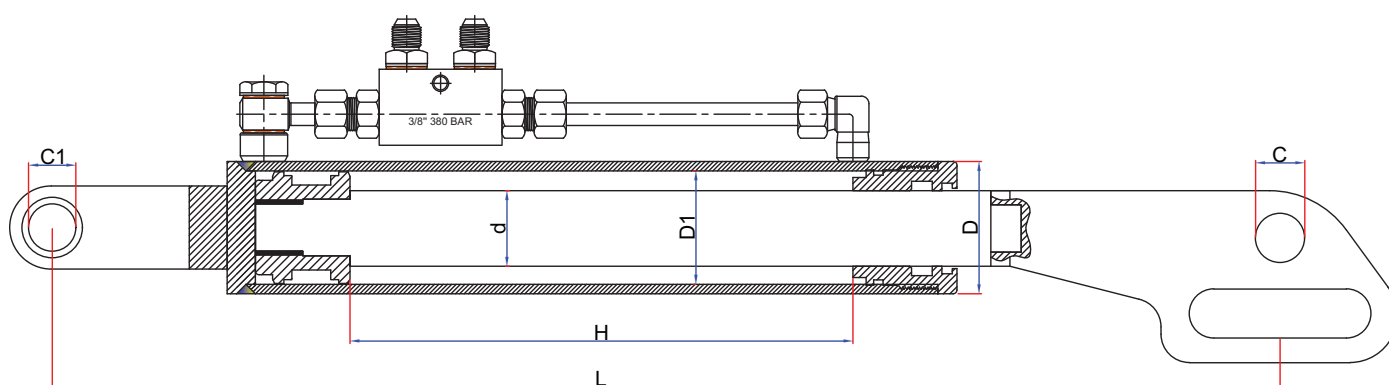
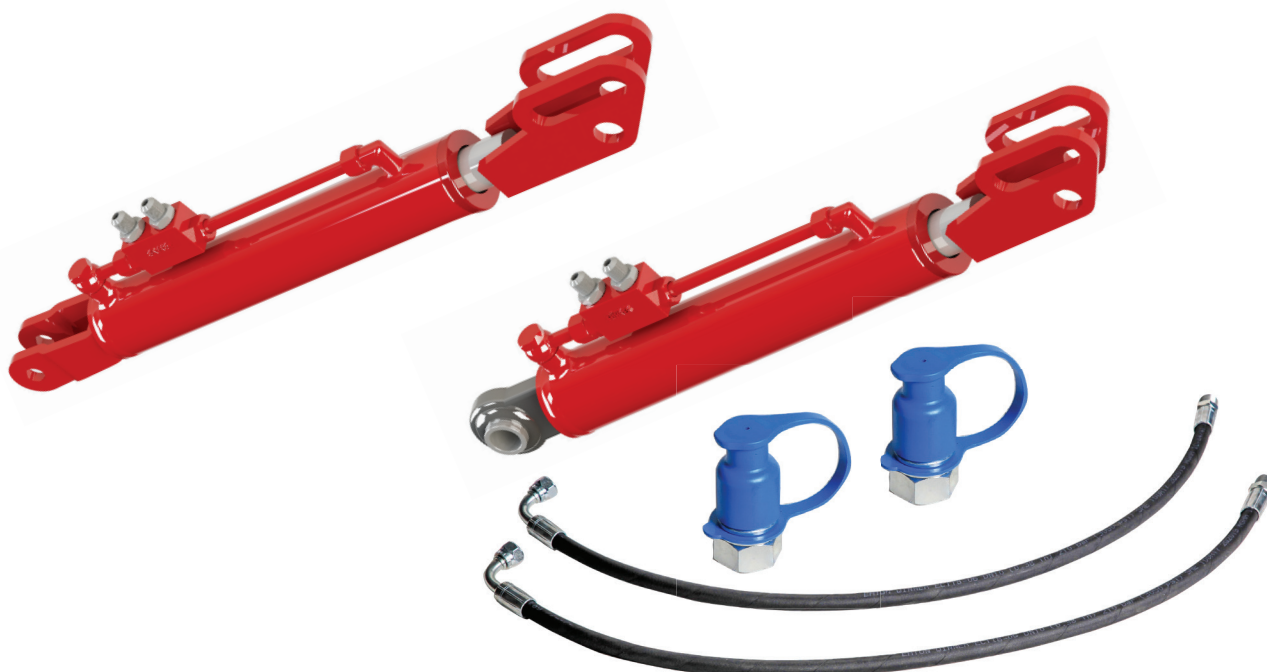


TECHNICAL SPECIFICATIONS

Stock Code	Product Type	Capacity (Ton)	Closed Height L - (cm)	Stroke H-(mm)	Pin Diameter C1-C (mm)	Type	Outer Diameter D1-D (mm)	Bar Diameter d - (mm)
SAR-600	SIDE LINK HYDRAULIC CYLINDER	2	50	200	26*26-GG		60*70	40
SAR-601	SIDE LINK HYDRAULIC CYLINDER	2	55	250	26*26-GG		60*70	40
SAR-602	SIDE LINK HYDRAULIC CYLINDER	2	60	300	26*26-GG		60*70	40
SAR-603	SIDE LINK HYDRAULIC CYLINDER	2	68	370	26*26-GG		60*70	40
SAR-604	SIDE LINK HYDRAULIC CYLINDER	2	50	200	19*26-DG		60*70	40
SAR-605	SIDE LINK HYDRAULIC CYLINDER	2	55	250	19*26-DG		60*70	40
SAR-606	SIDE LINK HYDRAULIC CYLINDER	2	60	300	19*26-DG		60*70	40
SAR-607	SIDE LINK HYDRAULIC CYLINDER	2	68	370	19*26-DG		60*70	40
SAR-608	SIDE LINK HYDRAULIC CYLINDER	2	50	200	26*26-GG	DiK	60*70	40
SAR-609	SIDE LINK HYDRAULIC CYLINDER	2	55	250	26*26-GG	DiK	60*70	40
SAR-610	SIDE LINK HYDRAULIC CYLINDER	2	60	300	26*26-GG	DiK	60*70	40
SAR-611	SIDE LINK HYDRAULIC CYLINDER	2	68	370	26*26-GG	DiK	60*70	40
SAR-612	SIDE LINK HYDRAULIC CYLINDER	2	50	200	19*26-DG	DiK	60*70	40
SAR-613	SIDE LINK HYDRAULIC CYLINDER	2	55	250	19*26-DG	DiK	60*70	40
SAR-614	SIDE LINK HYDRAULIC CYLINDER	2	60	300	19*26-DG	DiK	60*70	40
SAR-615	SIDE LINK HYDRAULIC CYLINDER	2	68	370	19*26-DG	DiK	60*70	40
SAR-616	SIDE LINK HYDRAULIC CYLINDER	3	50	200	26*26-GG		63*75	40
SAR-617	SIDE LINK HYDRAULIC CYLINDER	3	55	250	26*26-GG		63*75	40
SAR-618	SIDE LINK HYDRAULIC CYLINDER	3	60	300	26*26-GG		63*75	40
SAR-619	SIDE LINK HYDRAULIC CYLINDER	3	68	370	19*26-DG		63*75	40
SAR-620	SIDE LINK HYDRAULIC CYLINDER	3	50	200	19*26-DG		63*75	40
SAR-621	SIDE LINK HYDRAULIC CYLINDER	3	55	250	19*26-DG		63*75	40
SAR-622	SIDE LINK HYDRAULIC CYLINDER	3	60	300	19*26-DG		63*75	40
SAR-623	SIDE LINK HYDRAULIC CYLINDER	3	68	370	19*26-DG		63*75	40
SAR-624	SIDE LINK HYDRAULIC CYLINDER	3	50	200	26*26-GG	DiK	63*75	40
SAR-625	SIDE LINK HYDRAULIC CYLINDER	3	55	250	26*26-GG	DiK	63*75	40
SAR-626	SIDE LINK HYDRAULIC CYLINDER	3	60	300	26*26-GG	DiK	63*75	40
SAR-627	SIDE LINK HYDRAULIC CYLINDER	3	68	370	26*26-GG	DiK	63*75	40
SAR-628	SIDE LINK HYDRAULIC CYLINDER	3	50	200	19*26-DG	DiK	63*75	40
SAR-629	SIDE LINK HYDRAULIC CYLINDER	3	55	250	19*26-DG	DiK	63*75	40
SAR-630	SIDE LINK HYDRAULIC CYLINDER	3	60	300	19*26-DG	DiK	63*75	40
SAR-631	SIDE LINK HYDRAULIC CYLINDER	3	68	370	19*26-DG	DiK	63*75	40



TECHNICAL SPECIFICATIONS								
Stock Code	Product Type	Capacity (Ton)	Closed Height L - (cm)	Stroke H-(mm)	Pin Diameter C1-C (mm)	Type	Outer Diameter D1-D (mm)	Bar Diameter d - (mm)
SAR-700	SIDE LINK HYDRAULIC CYLINDER	5	50	185	26*26-GG		70*80	45
SAR-701	SIDE LINK HYDRAULIC CYLINDER	5	55	235	26*26-GG		70*80	45
SAR-702	SIDE LINK HYDRAULIC CYLINDER	5	60	285	26*26-GG		70*80	45
SAR-703	SIDE LINK HYDRAULIC CYLINDER	5	68	355	26*26-GG		70*80	45
SAR-704	SIDE LINK HYDRAULIC CYLINDER	5	50	185	19*26-DG		70*80	45
SAR-705	SIDE LINK HYDRAULIC CYLINDER	5	55	235	19*26-DG		70*80	45
SAR-706	SIDE LINK HYDRAULIC CYLINDER	5	60	285	19*26-DG		70*80	45
SAR-707	SIDE LINK HYDRAULIC CYLINDER	5	68	355	19*26-DG		70*80	45
SAR-708	SIDE LINK HYDRAULIC CYLINDER	5	50	185	26*26-GG	DİK	70*80	45
SAR-709	SIDE LINK HYDRAULIC CYLINDER	5	55	235	26*26-GG	DİK	70*80	45
SAR-710	SIDE LINK HYDRAULIC CYLINDER	5	60	285	26*26-GG	DİK	70*80	45
SAR-711	SIDE LINK HYDRAULIC CYLINDER	5	68	355	26*26-GG	DİK	70*80	45
SAR-712	SIDE LINK HYDRAULIC CYLINDER	5	50	185	19*26-DG	DİK	70*80	45
SAR-713	SIDE LINK HYDRAULIC CYLINDER	5	55	235	19*26-DG	DİK	70*80	45
SAR-714	SIDE LINK HYDRAULIC CYLINDER	5	60	385	19*26-DG	DİK	70*80	45
SAR-715	SIDE LINK HYDRAULIC CYLINDER	5	68	355	19*26-DG	DİK	70*80	45
SAR-716	SIDE LINK HYDRAULIC CYLINDER	2	50	250	26*26-GG	C.HEAD	60*70	40
SAR-717	SIDE LINK HYDRAULIC CYLINDER	2	55	300	26*26-GG	C.HEAD	60*70	40
SAR-718	SIDE LINK HYDRAULIC CYLINDER	2	60	350	26*26-GG	C.HEAD	60*70	40
SAR-719	SIDE LINK HYDRAULIC CYLINDER	2	68	370	26*26-GG	C.HEAD	60*70	40
SAR-720	SIDE LINK HYDRAULIC CYLINDER	3	50	250	26*26-GG	C.HEAD	60*70	40
SAR-721	SIDE LINK HYDRAULIC CYLINDER	3	55	300	26*26-GG	C.HEAD	60*70	40
SAR-722	SIDE LINK HYDRAULIC CYLINDER	3	60	350	26*26-GG	C.HEAD	60*70	40
SAR-723	SIDE LINK HYDRAULIC CYLINDER	3	68	370	26*26-GG	C.HEAD	60*70	40
SAR-724	SIDE LINK HYDRAULIC CYLINDER	5	50	185	26*26-GG	C.HEAD	70*80	45
SAR-725	SIDE LINK HYDRAULIC CYLINDER	5	55	235	26*26-GG	C.HEAD	70*80	45
SAR-726	SIDE LINK HYDRAULIC CYLINDER	5	60	285	26*26-GG	C.HEAD	70*80	45
SAR-727	SIDE LINK HYDRAULIC CYLINDER	5	68	355	26*26-GG	C.HEAD	70*80	45
SAR-728	SIDE LINK HYDRAULIC CYLINDER	7,5 CAT2	50	180	26*26-GG	C.HEAD JOINT	90*105	50
SAR-729	SIDE LINK HYDRAULIC CYLINDER	7,5 CAT2	55	230	26*26-GG	C.HEAD JOINT	90*105	50
SAR-730	SIDE LINK HYDRAULIC CYLINDER	7,5 CAT2	60	280	26*26-GG	C.HEAD JOINT	90*105	50
SAR-731	SIDE LINK HYDRAULIC CYLINDER	7,5 CAT2	68	350	26*26-GG	C.HEAD JOINT	90*105	50
SAR-732	SIDE LINK HYDRAULIC CYLINDER	7,5 CAT3	50	180	26*26-GG	C.HEAD JOINT	90*105	50
SAR-733	SIDE LINK HYDRAULIC CYLINDER	7,5 CAT3	55	230	26*26-GG	C.HEAD JOINT	90*105	50
SAR-734	SIDE LINK HYDRAULIC CYLINDER	7,5 CAT3	60	280	26*26-GG	C.HEAD JOINT	90*105	50
SAR-735	SIDE LINK HYDRAULIC CYLINDER	7,5 CAT3	68	350	26*26-GG	C.HEAD JOINT	90*105	50



TECHNICAL SPECIFICATIONS

Stock Code	Product Type	Capacity (Ton)	Closed Height L-(cm)	Stroke H-(mm)	Pin Diameter-C1-C-(mm)	Pipe Diameter D1-D-(mm)	Shaft Diameter d-(mm)
SAR-800	SIDE ARM HYDRAULIC CILINDER	2	45	100	19*26	60*70	40
SAR-801	SIDE ARM HYDRAULIC CILINDER	2	50	150	19*26	60*70	40
SAR-802	SIDE ARM HYDRAULIC CILINDER	2	55	200	19*26	60*70	40
SAR-803	SIDE ARM HYDRAULIC CILINDER	2	60	250	19*26	60*70	40
SAR-804	SIDE ARM HYDRAULIC CILINDER	2	65	300	19*26	60*70	40
SAR-805	SIDE ARM HYDRAULIC CILINDER	2	70	350	19*26	60*70	40
SAR-806	SIDE ARM HYDRAULIC CILINDER	2	45	100	23*26	60*70	40
SAR-807	SIDE ARM HYDRAULIC CILINDER	2	50	150	23*26	60*70	40
SAR-808	SIDE ARM HYDRAULIC CILINDER	2	55	200	23*26	60*70	40
SAR-809	SIDE ARM HYDRAULIC CILINDER	2	60	250	23*26	60*70	40
SAR-810	SIDE ARM HYDRAULIC CILINDER	2	65	300	23*26	60*70	40
SAR-811	SIDE ARM HYDRAULIC CILINDER	2	70	350	23*26	60*70	40



● SAR-5000



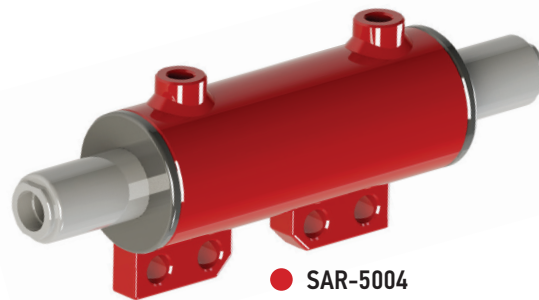
● SAR-5001



● SAR-5002



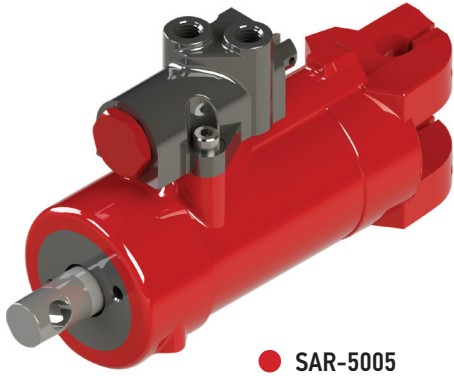
● SAR-5003



● SAR-5004

TECHNICAL SPECIFICATIONS

Stock Code	Product Type	Oem Code	Brand	Model
SAR-5000	HYDRAULIC STEERING CYLINDER	3773713M91 3763762M91 6202491M91	MASSEY FERGUSON	375, 383, 390T, 393, 398, 399
SAR-5001	HYDRAULIC STEERING CYLINDER	-	MASSEY FERGUSON	-
SAR-5002	T BRAKE CENTER (THICK HOLE)	84247064	FIAT	TD65D- TD75D
SAR-5003	T BRAKE CENTER (THIN HOLE)	87748455	FIAT	TD5.110- TD5.90
SAR-5004	HYDRAULIC STEERING CYLINDER	0013901U91	MASSEY FERGUSON	240- 260



● SAR-5005



● SAR-5006



● SAR-5007



● SAR-5008



● SAR-5009

TECHNICAL SPECIFICATIONS

Stock Code	Product Type	Oem Code	Brand	Model
SAR-5005	FRONT STEERING CYLINDER	1853466M93, 1884374M93,3186323M91, 3773740M91,1830316M91, 1853195M92, 1853466M91, 1884374M91, 1885579M91,3186320M91, 3186320M92, 505525M91	MASSEY FERGUSON	165, 168, 175, 175S, 178 185, 188, 265, 275, 285, 290 375, 390
SAR-5006	HID. STEERING CYLINER SHAFT 10 CM UZUN	0013901U91	MASSEY FERGUSON	240-260
SAR-5007	SUPPORT CYLINDER (HOSE-RAKOR-PIN)	84520524	CASE IH	65C- 75C
SAR-5008	HYDRAULIC STEERING CYLINDER	7182640001	BAŞAK	-
SAR-5009	HYDRAULIC SIDE ARM	-	BAŞAK	-



● SAR-5010



● SAR-5012 - PARALEL



● SAR-5011



● SAR-5012 - ÇAPRAZ



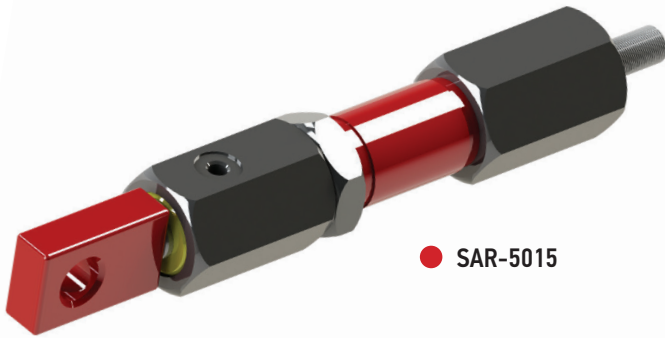
● SAR-5013



● SAR-5014

TECHNICAL SPECIFICATIONS

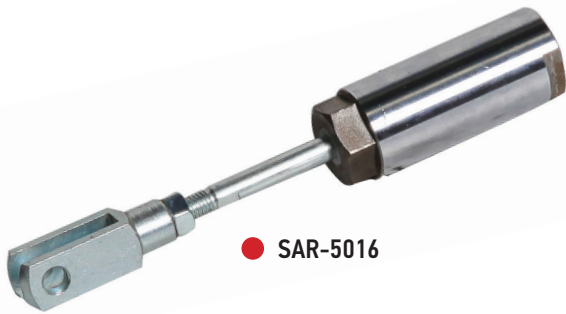
Stock Code	Product Type	Oem Code	Brand	Model
SAR-5010	HYDRAULIC STEERING CYLINDER	5088311	FIAT	54C-TT
SAR-5011	HYDRAULIC STEERING CYLINDER	5083321	FIAT	80-66DT
SAR-5012	HYDRAULIC STEERING CYLINDER (ROOTED) CROSS RAKOR - PARALLEL RAKOR	5093753, 5173145, 5113130, 67639, 5098112 - 5113093 - 5123968 - 5125260 - 5123022-5143022- 5189897 - 5140638	FIAT	6056 - 7056 - 45 - 66 - 80 - 66 - 100 - 110 - 55 - 65 - 446 - 466 - 566 - 666 - 766 - 580 - 680 - 780 - 880 - 880/5 - 980 - 55/46 - 55/66 - 60/66 - 65/46 - 65/66 - 70/66 - 80/66 - 55/90 - 60/90 - 65/90 - 70/90 - 80/90 - 85/90 - 90/90 - 100/90 - 110/90 - 60/93 - 60/94 - 6293 - 62/94 - 72/93 - 72/94 - 82/93 - 82/94
SAR-5013	FRONT STEERING WHEEL CEREBELLUM	11407	MASSEY FERGUSON	165 - 185 - 275- 285 - 290
SAR-5014	FRONT STEERING CYLINDER BRAINLESS	532193M91 - 1605121M92 - 3773711M91	MASSEY FERGUSON	"255- 265- 270-275- 285-290"



● SAR-5015



● SAR-5018



● SAR-5016



● SAR-5019



● SAR-5017

TECHNICAL SPECIFICATIONS				
Stock Code	Product Type	Oem Code	Brand	Model
SAR-5015	AUTO LIFT CYLINDER	0017100U91	MASSEY FERGUSON	-
SAR-5016	AUTO CYLINDER OUT FORK MECHANISM	0016658U91	MASSEY FERGUSON	277-3050-3105
SAR-5017	AUTO CYLINDER MECHANISM (HOSE)	17096	MASSEY FERGUSON	-
SAR-5018	AUTO CYLINDER MECHANISM (STEEL ELBOW)	17097	MASSEY FERGUSON	-
SAR-5019	AUTO CYLINDER MECHANISM (STRAIGHT RAKOR)	17098	MASSEY FERGUSON	-

● SAR-5020



● SAR-5021



● SAR-5022



● SAR-5023



● SAR-5024



TECHNICAL SPECIFICATIONS

Stock Code	Product Type	Oem Code	Brand	Model
SAR-5020	HYDROLIC WHEEL SHOCK ABSORBER (RIGHT-LEFT)	3401553M92-3774728V91-3774728M91-3773716M91-3443036M91	MASSEY FERGUSON	231, 240, 240EF.-255 EP-260 250, 253, 360, 362, 20D, 30E, 40E
SAR-5021	HYDROLIC WHEEL SHOCK ABSORBER (LEFT)	3401240M91, 0011403U91	MASSEY FERGUSON	20 - 202 - 203 - 205-2135 - 230 - 240 - 240S - 245 - 250 - 255 - 260 - 550 - 560
SAR-5022	HYDROLIC WHEEL SHOCK ABSORBER (RIGHT)	3401241M91, 0011404U91	MASSEY FERGUSON	20, 202, 203, 205, 2135
SAR-5023	HYDRAULIC STEERING CYLINDER	3429989M91-00112130U1	MASSEY FERGUSON	265, 275, 285, 290, 365, 375, 390, 396, 398, 399, 4225, 4235, 4240, 4245, 4255, 4260, 4265, 4270, 4325, 4335, 4345, 4355, 4360, 4365, 4370, 5425, 5435, 5445, 5455, 6610, 6120, 5445, 5435, 6130, 6140, 6235, 6245, 6255
SAR-5024	SUPPORT CYLINDER (RIGHT)	1749276M91-3773709M91	MASSEY FERGUSON	200 - 300 - 3000 SERİLERİ

● SAR-5025



● SAR-5028



● SAR-5026



● SAR-5027



● SAR-5029



TECHNICAL SPECIFICATIONS

Stock Code	Product Type	Oem Code	Brand	Model
SAR-5025	SUPPORT CYLINDER (LEFT)	3773710M91-1748456M92	MASSEY FERGUSON	200 - 300 - 3000 SERİLERİ
SAR-5026	HYDRAULIC STEERING CYLINDER	7256522	TÜMOSAN	4X4
SAR-5027	HYDRAULIC STEERING CYLINDER	7255837	TÜMOSAN	4x2
SAR-5028	HYDRAULIC STEERING CYLINDER (ROOTED)	7253799	TÜMOSAN	74,80N- 82,80N
SAR-5029	HYDRAULIC STEERING CYLINDER	5189895-5142046-5173144	FIAT	F100DT, C3394, F110DT, C3394, F110DT, 45-66, D3041, 50-66, D3041, 55-56DT, 55-66DT, D3104, 60-56DT, D4628, 60-66, D3104, 60-90DT, D3104, 60-93DT, 60-94DT, 65-90DT, D3041-3104, 65-93DT, 65-94DT, 70-66SDT, D4628, 70-90DT, D3104, 80-90DT, D3104, 85-90DT, 90-90DT, D3104, 100-90DT, 110-90DT, TD60D, TD70D, TD75D, TD80D, TD85D, TD90D, TD95D, TD5010, TD5020, TD5030, TD5050, TT60A, TT75A, 5530, 6530

● SAR-5030



● SAR-5031



● SAR-5033



● SAR-5032



● SAR-5034



TECHNICAL SPECIFICATIONS

Stock Code	Product Type	Oem Code	Brand	Model
SAR-5030	HYDRAULIC STEERING LIFT	716264001	BAŞAK	-
SAR-5031	HYDRAULIC STEERING CYLINDER (CROSS)	5142046 -5156717 -84191439- 84191439 - 5142052 - 5142054 - 5143971 - 5156717	FIAT	980DT, 4566DT, 5546DT, 7056DT, 8066DT, 110.90, DT-115.90, DT-130.90, DT-140.90,DT-100-90, 55-90, 60-90, 65-90, 70-90, 80-90, 85-90, 90-90
SAR-5032	SUPPORT CYLINDER	47839306	FIAT	TT4.55
SAR-5033	SUPPORT CYLINDER	5200740097	BAŞAK	-
SAR-5034	HYDRAULIC STEERING CYLINDER	188842A1	CASE IH	238-248-258-268- 288-3210-3220-3230- 385- 395-395 XL-4210- 4220-4230-4240-454- 474- 475-484-485-485 XL-495-495 XL-574- 584-585- 585 XL-595-595 XL-674-684-685-685 XL-695-695 XL-784-785-785 XL-795-884-885-885 XL-895-895 XL-995 XL-CX100- CX50-CX60-CX70- CX80-CX90-Hydro 84-Hydro 85-MX100 C-MX80 C-MX90 C



● SAR-5038



● SAR-5035



● SAR-5039



● SAR-5036



● SAR-5037

TECHNICAL SPECIFICATIONS

Stock Code	Product Type	Oem Code	Brand	Model
SAR-5035	SUPPORT CYLINDER	E080017331251	ERKUNT	ZF
SAR-5036	POWER STEERING PUMP	357197X1	MASSEY FERGUSON	165-168- 175-178-185- 188-265- 275-285-290
SAR-5037	BRAKE MASTER PISTON	87748269	FIAT	JX80 TIERII/JXU 105/ JXU 95/JXU 85/JX95 TIERII/JX90 TIERII/ JX55/JX75/JX70 TIERII/JX90_C_4/ JX90_C_2/JX60 TIERII/ JX60/JX70/JX80/ JX55E/JX60E/JX75 TIER 3/JX100 TIER 3/ JX75E/JX90 TIER 3/ JX80E/JX80 TIER 3/ JX70 TIER 3
SAR-5038	STEERING CYLINDER	3483329M92	MASSEY FERGUSON	340-350-355-360- 362-365-375-390- 390T
SAR-5039	STEERING CYLINDER	3765190M91	MASSEY FERGUSON	2205-2210- 2225-2235

● SAR-5040



● SAR-5042



● SAR-5043



● SAR-5041



● SAR-5044



TECHNICAL SPECIFICATIONS

Stock Code	Product Type	Oem Code	Brand	Model
SAR-5040	HYDRAULIC STEERING CYLINDER	5198883	FIAT	T7030, T7040, T7050, T7060, T7070, T7.220, T7.230, T7.235, T7.245, T7.250, T7.260, T7.270, T8.275, T8.300, T8.320, T8.350, T8.410, T8.435, TM120, TM130, TM140, TM155, TM175, TM190
SAR-5041	HYDRAULIC STEERING CYLINDER	5144126- 5134221-5144124- 5143970- 5156718	FIAT	F120DT, F130DT, C3394, 70-66DT, D3104, 70-66SDT, 70-88DT, 80-66, D3104, 80-66DT, D3104, 80-88DT, 115-90DT, D3063, 130-90DT, D3063, 140-90DT, 160-90DT, 180-90DT, 90, Farmall 95, JX75, JX80, JX85, JX90, JX95----TD75D, TD80D, TD90D, TD95D, TD5030, TD5050, 5530, 6530
SAR-5042	HYDRAULIC STEERING CYLINDER	126638-120226	BAŞAK	-
SAR-5043	HYDRAULIC STEERING CYLINDER	5189995	FIAT	T4040F, T4.100F, T4050F, T4.105F, T4060F, T4.110F, T4.75F, T4.80F, T4.85F, T4.90F, TN65F, TN70F, T4.95F, TN75F, TN80F, TN90F, TN95F, TN75FA, TN85FA, TN95FA, T4030F
SAR-5044	HYDRAULIC SUPPORT CYLINDER	-	TÜMOSAN	7000-8000

● SAR-5045



● SAR-5046



● SAR-5048



● SAR-5047



● SAR-5049



TECHNICAL SPECIFICATIONS				
Stock Code	Product Type	Oem Code	Brand	Model
SAR-5045	HYDRAULIC WHELL TENSIONER - HOSE KIT	-	MASSEY FERGUSON	265-285-266G- 277G-288G-286G- 398-3075- 3085-3095-3105
SAR-5046	HYDRAULIC STEERING CYLINDER	5189887 - 5165140 - 5190908 - 5083394	FIAT	JX70U, MXM120, MXM130, MXM140, MXU100, MXU110, MXU115, MXU125, MXU130, MXU135
SAR-5047	HYDRAULIC STEERING CYLINDER	5164023	FIAT	F100DT, D3394, F115DT, 72-93DT, 72-94DT, 82-93DT, 82-94DT, 88-93DT, 88-94DT T5030- 5040-5060-TD80-TD90- TD95-TL70-TL80-TL90- TL100-L75-L85-L95
SAR-5048	HYDRAULIC STEERING CYLINDER	103137	ERKUNT	-
SAR-5049	HYDRAULIC STEERING CYLINDER	109070	ERKUNT	-



● SAR-5050



● SAR-5051



● SAR-5052



● SAR-5053



● SAR-5054

TECHNICAL SPECIFICATIONS				
Stock Code	Product Type	Oem Code	Brand	Model
SAR-5050	HYDRAULIC STEERING CYLINDER ROOT	-	FIAT	70/56
SAR-5051	HYDRAULIC LIFTING CYLINDER (RIGHT)	47474755	CASE IH	JX 100 - JX 90 - JX 80 - JX 70
SAR-5052	HYDRAULIC LIFTING CYLINDER (LEFT)	47474754	CASE IH	JX 100 - JX 90 - JX 80 - JX 70 - TD95 - TD100 - TD110
SAR-5053	55/46 HID. PISTON ROOT FLAT TIP	9960076	FIAT	55-46
SAR-5054	54C HID. PISTON ROOT E:M. FLAT	9962673	FIAT	54C



● SAR-5055



● SAR-5059



● SAR-5056



● SAR-5057



● SAR-5060

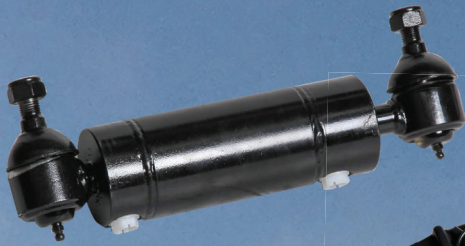


● SAR-5058

TECHNICAL SPECIFICATIONS

Stock Code	Product Type	Oem Code	Brand	Model
SAR-5055	REPL ROTBAŞI	8278057400	TÜMOSAN	-
SAR-5056	REPL. PISTON ROOT	5080087	FIAT	54C
SAR-5057	REPL. PISTON ROOT	5080092	FIAT	80/66DT
SAR-5058	REPL. PISTON ROOT	9962188	FIAT	80/66
SAR-5059	PTO KOTROL UNIT	47901714	FIAT	TD SERİSİ
SAR-5060	SUPPORT PISTON	47375572	NEW HOLLAND	

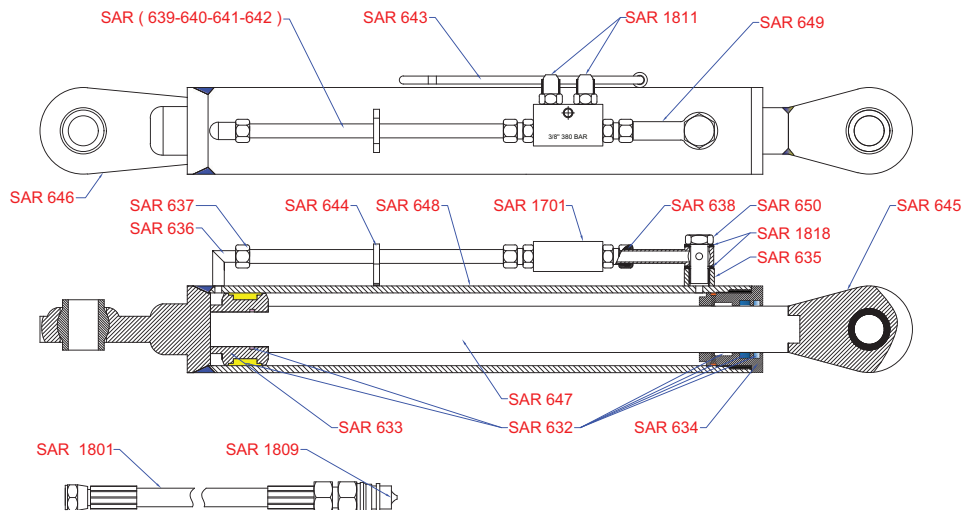




SPECIAL PURPOSES

HYDRAULIC LIFTS





TECHNICAL SPECIFICATIONS

Stock Code	Product Type	Group	Type
SAR-632	SIDE ARM HYDRAULIC CYLINDER REPAIR SET	HID. SIDE ARM.- HID. SIDE LINK	STANTIGHTT
SAR-633	SIDE ARM HYDRAULIC CYLINDER PISTON	HID. SIDE ARM.- HID. SIDE LINK	STANTIGHTT
SAR-634	SIDE ARM HYDRAULIC CYLINDER CAP	HID. SIDE ARM.- HID. SIDE LINK	STANTIGHTT
SAR-635	3/8 WELDED MASON	HID. SIDE ARM.- HID. SIDE LINK	STANTIGHTT
SAR-636	M18X1.5 WELDED ELBOW	HID. SIDE ARM.- HID. SIDE LINK	STANTIGHTT
SAR-637	M18X1.5 NUT	HID. SIDE ARM.- HID. SIDE LINK	STANTIGHTT
SAR-638	12MM THIMBLE	HID. SIDE ARM.- HID. SIDE LINK	STANTIGHTT
SAR-639	12MM PUMPING PIPE	HID. SIDE ARM.- HID. SIDE LINK	68 CM
SAR-640	12MM PUMPING PIPE	HID. SIDE ARM.- HID. SIDE LINK	60 CM
SAR-641	12MM PUMPING PIPE	HID. SIDE ARM.- HID. SIDE LINK	55 CM
SAR-642	12MM PUMPING PIPE	HID. SIDE ARM.- HID. SIDE LINK	50 CM
SAR-643	SUSPENSION BRACKET	HID. SIDE ARM.	STANTIGHTT
SAR-644	PIPE SUPPORT	HID. SIDE ARM.- HID. SIDE LINK	STANTIGHTT
SAR-645	BAR HEAD	HID. SIDE ARM.- HID. SIDE LINK	STANTIGHTT
SAR-646	PIPE HEAD	HID. SIDE ARM.- HID. SIDE LINK	STANTIGHTT
SAR-647	PROTECTED BAR	HID. SIDE ARM.- HID. SIDE LINK	STANTIGHTT
SAR-648	OUTHER PIPE	HID. SIDE ARM.- HID. SIDE LINK	STANTIGHTT
SAR-649	RING RAKOR 12X17	HID. SIDE ARM.- HID. SIDE LINK	STANTIGHTT
SAR-650	BOLT RAKORU	HID. SIDE ARM.- HID. SIDE LINK	STANTIGHTT



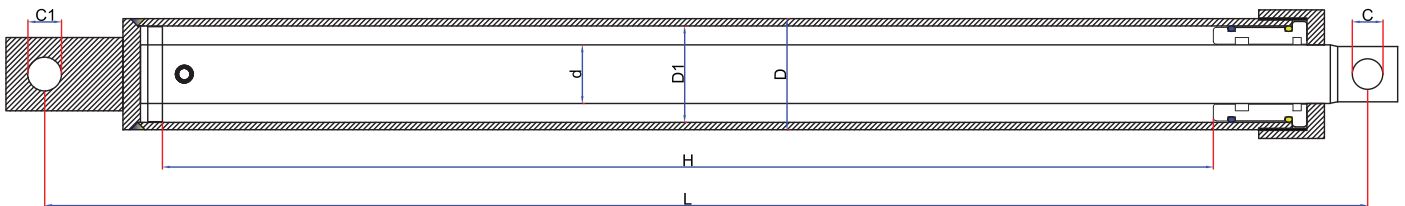
● SAR-911-SAR-913



● SAR-900-SAR-909



● SAR-910-SAR-912



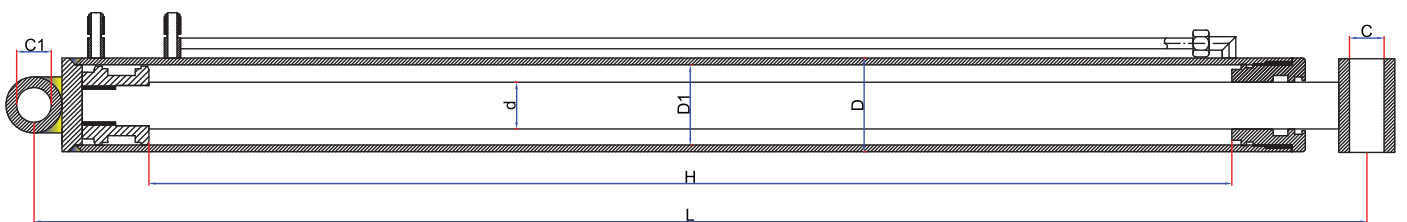
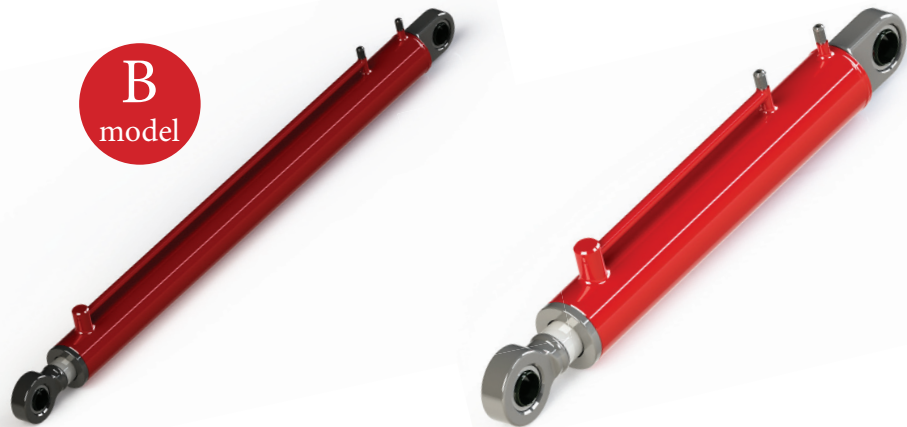
TECHNICAL SPECIFICATIONS

Stock Code	Product Type	Capacity (Ton)	Closed Height L - (cm)	Stroke H-(mm)	Pipe Diameter D1-D (mm)	Bar Diameter d-(mm)
SAR-900	BUCKET LIFT	2	50	350	5*76	40
SAR-901	BUCKET LIFT	2	60	450	5*76	40
SAR-902	BUCKET LIFT	2	68	530	5*76	40
SAR-903	BUCKET LIFT	2	78	630	5*76	40
SAR-904	BUCKET LIFT	2	90	720	5*76	40
SAR-905	BUCKET LIFT	3	68	530	5*90	45
SAR-906	BUCKET LIFT	3	78	630	5*90	45
SAR-907	BUCKET LIFT	3	90	720	5*90	45
SAR-908	BUCKET LIFT	2	78	630	5*76	45
SAR-909	BUCKET LIFT	2	90	720	5*76	45
SAR-910	BUCKET LIFT	3	53	320	63*75	45
SAR-911	BUCKET LIFT LOCKED	3	53	320	63*75	45
SAR-912	BUCKET LIFT	2	53	320	60*70	40
SAR-913	BUCKET LIFT LOCKED	2	53	320	60*70	40

A
model

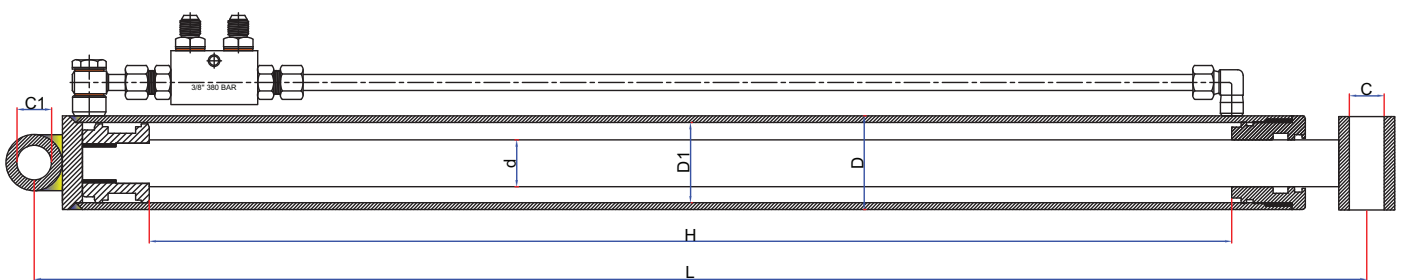


B
model



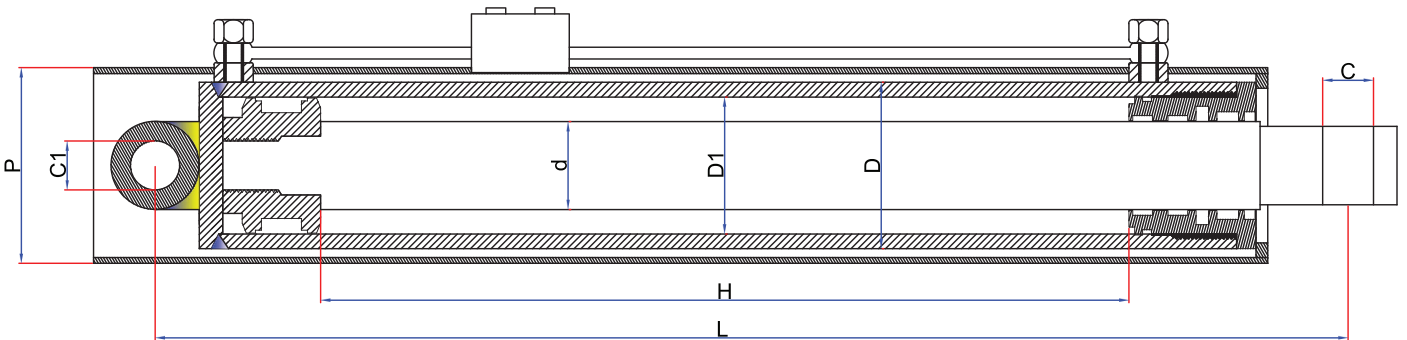
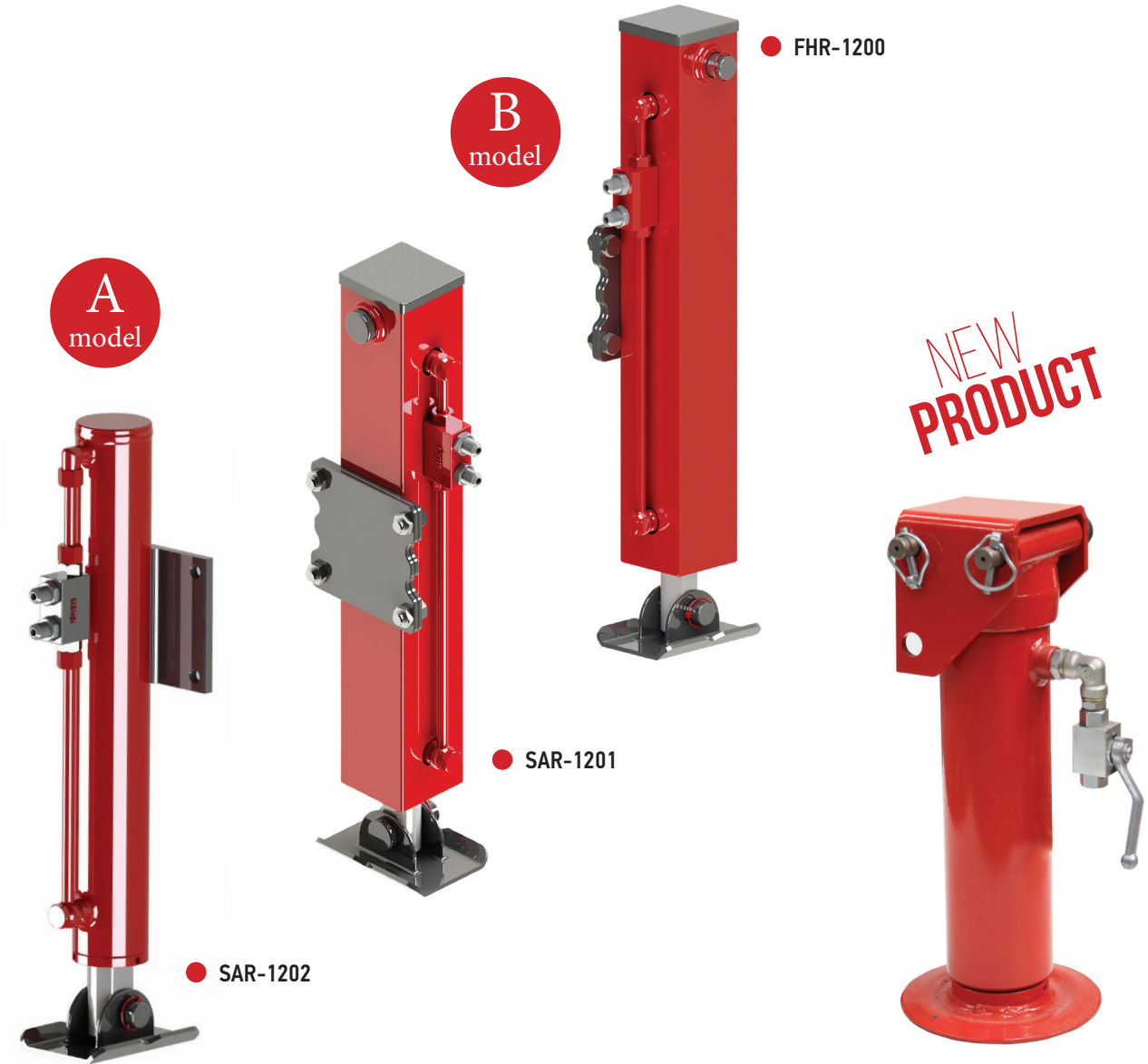
TECHNICAL SPECIFICATIONS

Stock Code	Product Type	Capacity (Ton)	Closed Height L - (cm)	Stroke H-(mm)	Pipe Diameter D1-D (mm)	Bar Diameter d- (mm)
SAR-1000	DOUBLE SIDE FACILITIES LIFT	2	40	210	60*70	40
SAR-1001	DOUBLE SIDE FACILITIES LIFT	2	50	310	60*70	40
SAR-1002	DOUBLE SIDE FACILITIES LIFT	2	60	410	60*70	40
SAR-1003	DOUBLE SIDE FACILITIES LIFT	2	70	510	60*70	40
SAR-1004	DOUBLE SIDE FACILITIES LIFT	2	80	600	60*70	40
SAR-1005	DOUBLE SIDE FACILITIES LIFT	2	90	700	60*70	40
SAR-1006	DOUBLE SIDE FACILITIES LIFT	2	100	800	60*70	40

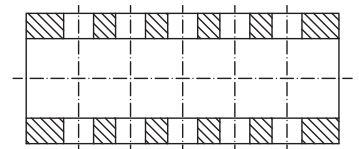
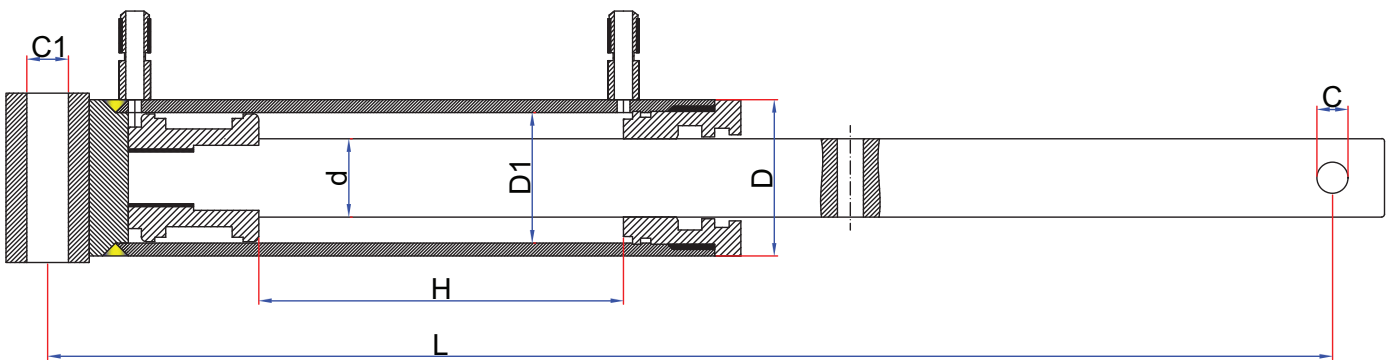


TECHNICAL SPECIFICATIONS

Stock Code	Product Type	Capacity (Ton)	Closed Height L - (cm)	Stroke H-(mm)	Pipe Diameter D1-D (mm)	Bar Diameter d- (mm)
SAR-1100	DOUBLE SIDE LOCKED LIFT	2	40	210	60*70	40
SAR-1101	DOUBLE SIDE LOCKED LIFT	2	50	310	60*70	40
SAR-1102	DOUBLE SIDE LOCKED LIFT	2	60	410	60*70	40
SAR-1103	DOUBLE SIDE LOCKED LIFT	2	70	510	60*70	40
SAR-1104	DOUBLE SIDE LOCKED LIFT	2	80	600	60*70	40
SAR-1105	DOUBLE SIDE LOCKED LIFT	2	90	700	60*70	40
SAR-1106	DOUBLE SIDE LOCKED LIFT	2	100	800	60*70	40



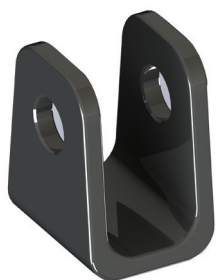
TECHNICAL SPECIFICATIONS								
Stock Code	Product Type	Capacity (Ton)	Closed Height L - (cm)	Stroke H-(mm)	Type	Profile Dimensions P - (mm)	Pipe Diameter D1-D (mm)	Bar Diameter d - (mm)
SAR-1200	HYDRAULIC TRAILER JACKS	3	61	420	KİLİTLİ	90*90	60*70	40
SAR-1201	HYDRAULIC TRAILER JACKS	6	61	420	KİLİTLİ	100*100	70*80	45
SAR-1202	HYDRAULIC TRAILER JACKS	5	59	420	KİLİTLİ	-	63*75	45



TECHNICAL SPECIFICATIONS					
Stock Code	Product Type	Closed Height L - (cm)	Stroke H-(mm)	Pipe Diameter D1 - D (mm)	Bar Diameter d- (mm)
SAR-1203	DRILL LIFT	42	130	50*60	30
SAR-1204	DRILL LIFT	33	130	50*60	30
SAR-1205	DRILL LIFT	26	65	50*60	30



● SAR-1306



TECHNICAL SPECIFICATIONS

Stock Code	Product Type	Closed Height L - (cm)	Stroke H - (mm)	Pipe Diameter D1-D (mm)	Bar Diameter d - (mm)
SAR-1300	STORE LIFT	72.5	832	80x90	40
SAR-1301	AXIS LIFT	33	168	63x75	40
SAR-1302	RAKE LIFT	45	300	50x60	30
SAR-1303	TETRA POD LIFT	52.5	320	50x60	25
SAR-1304	HAZELNUT PASTRY LIFT	90	720	60x70	40
SAR-1305	HAZELNUT PASTRY LIFT	70	520	60x70	40
SAR-1306	ARROW LIFT - SET	66	420	60x70	35
SAR-1307	FORKLESS BRAKE LIIFT	30	183	50x60	30
SAR-1308	FOR BRAKE LIFT	29	163	50x60	30
SAR-1309	GUIDE MARKER LIFT	48.5	164	32x40	18
SAR-1310	BASKET LIFT	70	281	50x60	30
SAR-1311	GOBLE LIFT	59	333	90x105	50
SAR-1312	TRAILER CUP LIFT	60	400	50x60	30
SAR-1313	TRAILER CUP LIFT	70	500	50x60	30
SAR-1314	TRAILER CUP LIFT	80	600	50x60	30



● SAR-1300



● SAR-1301



● SAR-1302



● SAR-1312 - SAR-1313 - SAR-1314



● SAR-1303



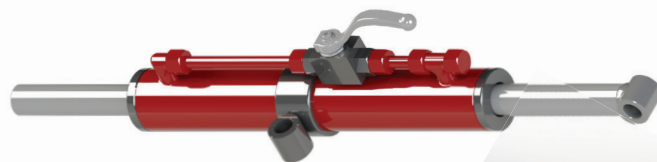
● SAR-1304 / SAR-1305



● SAR-1307 / SAR-1308



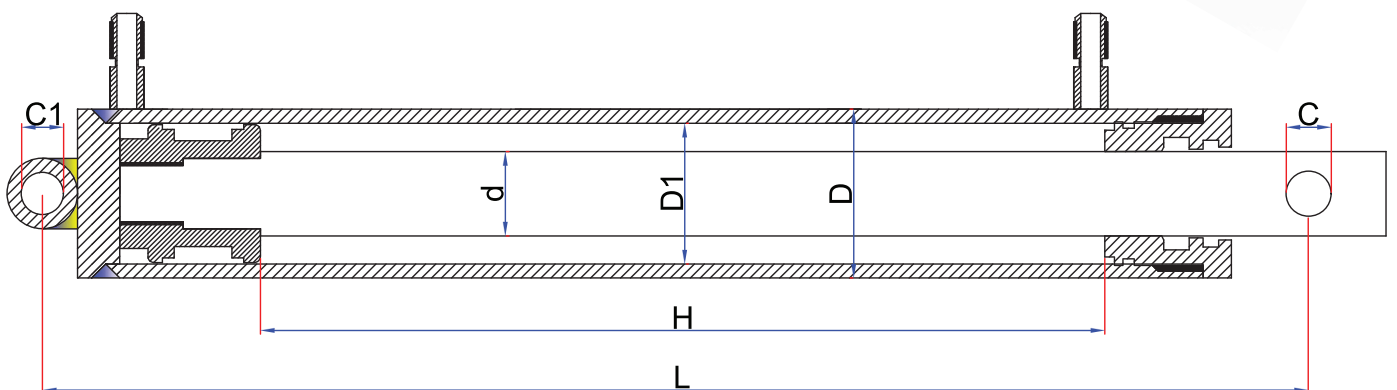
● SAR-1309



● SAR-1310



● SAR-1311





TÜMOSAN



TECHNICAL SPECIFICATIONS		
Stock Code	Product Type	Suitable Models
SAR-1400	TÜMOSAN SUPPORT KIT SET	7000 - 8000



TECHNICAL SPECIFICATIONS		
Stock Code	Product Type	Suitable Models
SAR-1401	MASSEY FERGUSON SUPPORT KIT SET	265-285-266G-277G-288G-286G-398-3075-3085-3095-3105

SAR-1402

SUPPORT KIT SETS



JOHN DEERE



TECHNICAL SPECIFICATIONS

Stock Code	Product Type	Suitable Models
SAR-1402	JOHNDEERE SUPPORT KIT SET	5050-5060-5065-5075E-5625-2725-5083E-5093E



TECHNICAL SPECIFICATIONS

Stock Code	Product Type	Suitable Models
SAR-1403	FORD SUPPORT KIT SET	5000-5600-6600-6610-6640-7000-7610-7740



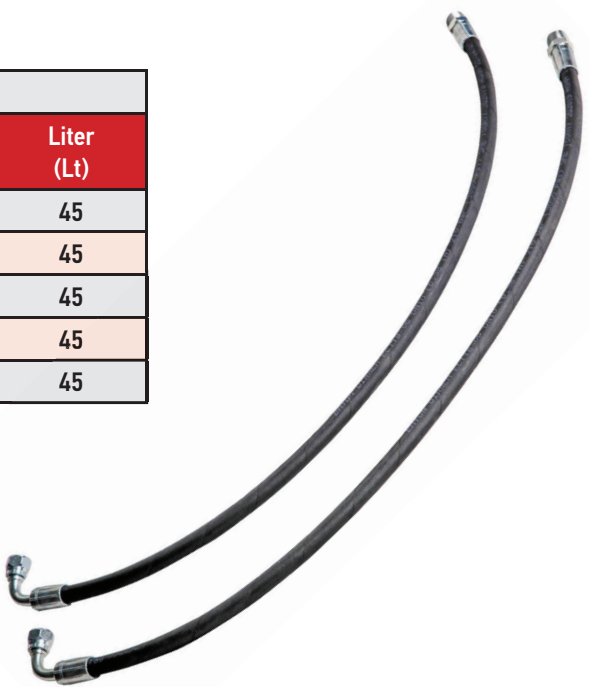
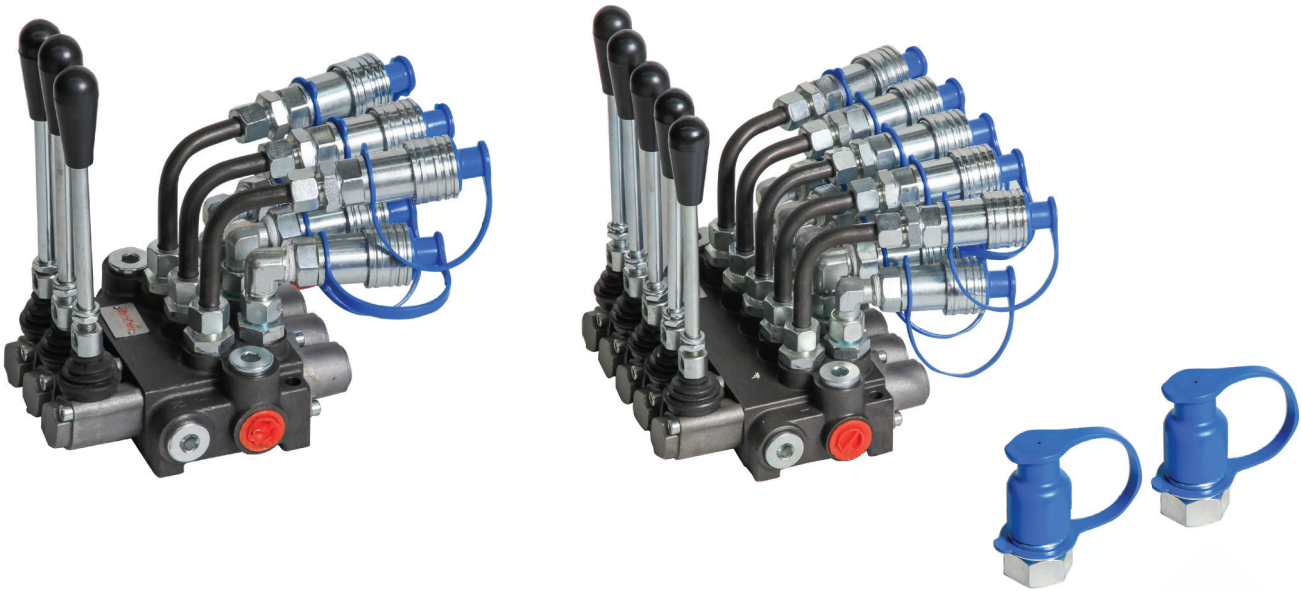
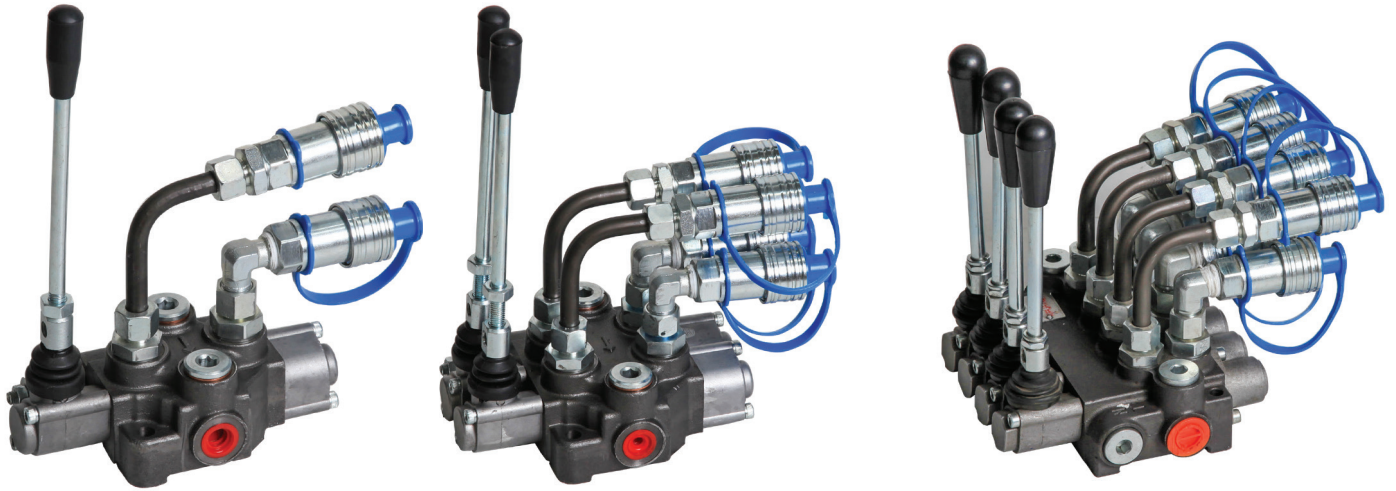
TECHNICAL SPECIFICATIONS			
Stock Code	Type	Rakor	Liter
SAR-1500	M-40 1P	3/8"-1/2"	40
SAR-1501	M-45 1P	3/8"-1/2"	45
SAR-1502	M-45 2P	3/8"-1/2"	45
SAR-1503	M-45 3P	3/8"-1/2"	45
SAR-1504	M-45 4P	3/8"-1/2"	45
SAR-1505	M-45 5P	3/8"-1/2"	45
SAR-1506	M-45 6P	3/8"-1/2"	45
SAR-1507	MS-45 1P	3/8"-1/2"	45
SAR-1508	MS-45 2P	3/8"-1/2"	45
SAR-1509	MS-45 3P	3/8"-1/2"	45
SAR-1510	MS-45 4P	3/8"-1/2"	45
SAR-1511	MS-45 5P	3/8"-1/2"	45
SAR-1512	MS-45 6P	3/8"-1/2"	45
SAR-1513	MS-45 7P	3/8"-1/2"	45
SAR-1514	M-70 1P	1/2"-3/4"	70
SAR-1515	M-70 2P	1/2"-3/4"	70
SAR-1516	M-70 3P	1/2"-3/4"	70
SAR-1517	M-70 4P	1/2"-3/4"	70
SAR-1518	M-70 5P	1/2"-3/4"	70
SAR-1519	M-70 6P	1/2"-3/4"	70
SAR-1520	M-80 1P	1/2"-3/4"	80
SAR-1521	M-80 2P	1/2"-3/4"	80
SAR-1522	M-80 3P	1/2"-3/4"	80
SAR-1523	M-80 4P	1/2"-3/4"	80
SAR-1524	M-80 5P	1/2"-3/4"	80
SAR-1525	M-80 6P	1/2"-3/4"	80



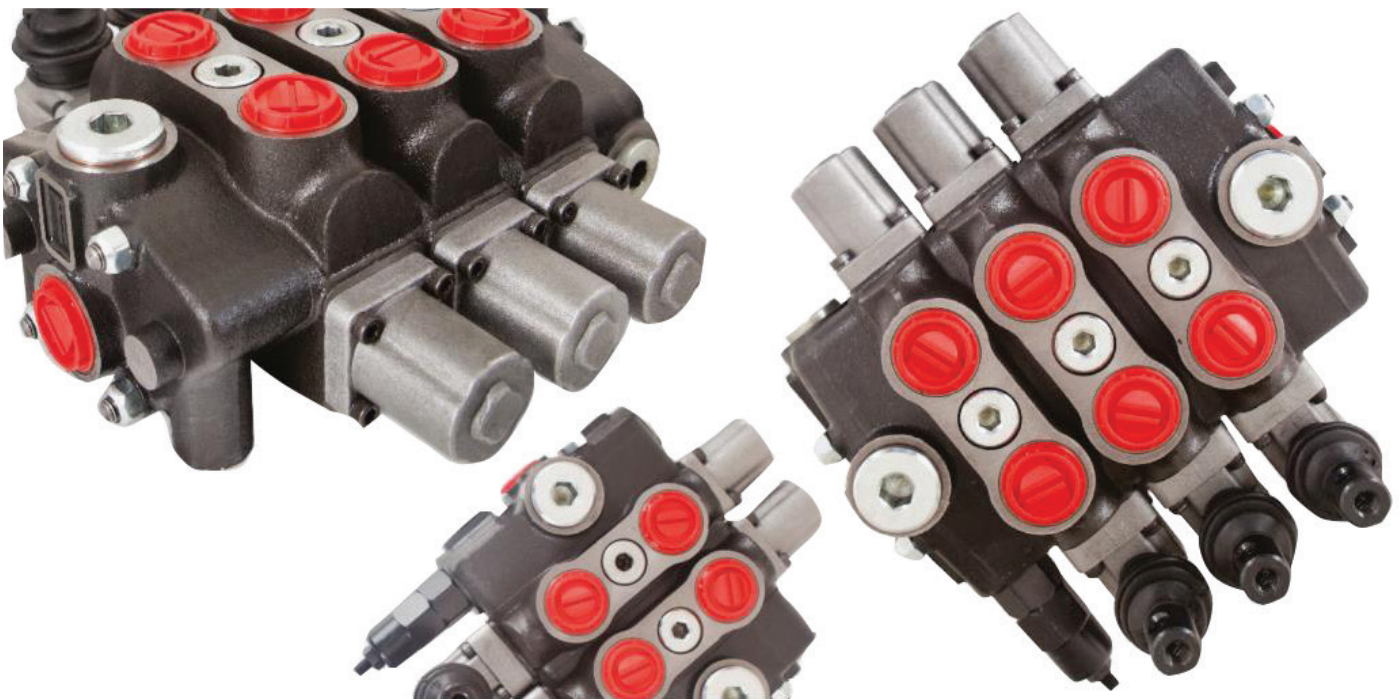


TECHNICAL SPECIFICATIONS

Stock Code	Type	Rakor	Liter
SAR-1600	PD-80 1P	3/4"-1" 1/2"-3/4"	80
SAR-1601	PD-80 2P	1/2"-3/4"	80
SAR-1602	PD-80 3P	1/2"-3/4"	80
SAR-1603	PD-80 4P	1/2"-3/4"	80
SAR-1604	PD-80 5P	1/2"-3/4"	80
SAR-1605	PD-80 6P	1/2"-3/4"	80
SAR-1606	PD-80 7P	1/2"-3/4"	80
SAR-1607	PD-80 8P	1/2"-3/4"	80
SAR-1608	PD-80 9P	1/2"-3/4"	80
SAR-1609	PD-80 10P	1/2"-3/4"	80
SAR-1610	PD-80 11P	1/2"-3/4"	80
SAR-1611	PD-80 12P	1/2"-3/4"	80
SAR-1612	PD-100 1P	1/2"-3/4"	100
SAR-1613	PD-100 2P	1/2"-3/4"	100
SAR-1614	PD-100 3P	1/2"-3/4"	100
SAR-1615	PD-100 4P	1/2"-3/4"	100
SAR-1616	PD-100 5P	1/2"-3/4"	100
SAR-1617	PD-100 6P	1/2"-3/4"	100
SAR-1618	PD-100 7P	1/2"-3/4"	100
SAR-1619	PD-100 8P	1/2"-3/4"	100
SAR-1620	PD-100 9P	1/2"-3/4"	100
SAR-1621	PD-100 10P	1/2"-3/4"	100
SAR-1622	PD-100 11P	1/2"-3/4"	100
SAR-1623	PD-100 12P	1/2"-3/4"	100
SAR-1624	PD-120 1P	1/2"-3/4"	120
SAR-1625	PD-120 2P	1/2"-3/4"	120
SAR-1626	PD-120 3P	1/2"-3/4"	120
SAR-1627	PD-120 4P	1/2"-3/4"	120
SAR-1628	PD-120 5P	1/2"-3/4"	120
SAR-1629	PD-120 6P	1/2"-3/4"	120
SAR-1630	PD-120 7P	1/2"-3/4"	120
SAR-1631	PD-120 8P	1/2"-3/4"	120
SAR-1632	PD-120 9P	1/2"-3/4"	120
SAR-1633	PD-120 10P	1/2"-3/4"	120
SAR-1634	PD-120 11P	1/2"-3/4"	120
SAR-1635	PD-120 12P	1/2"-3/4"	120
SAR-1636	PD-150 1P	3/4"-1"	150
SAR-1637	PD-150 2P	3/4"-1"	150
SAR-1638	PD-150 3P	3/4"-1"	150
SAR-1639	PD-150 4P	3/4"-1"	150
SAR-1640	PD-150 5P	3/4"-1"	150
SAR-1641	PD-150 6P	3/4"-1"	150
SAR-1642	PD-150 7P	3/4"-1"	150
SAR-1643	PD-150 8P	3/4"-1"	150
SAR-1644	PD-150 9P	3/4"-1"	150
SAR-1645	PD-150 10P	3/4"-1"	150
SAR-1646	PD-150 11P	3/4"-1"	150
SAR-1647	PD-150 12P	3/4"-1"	150



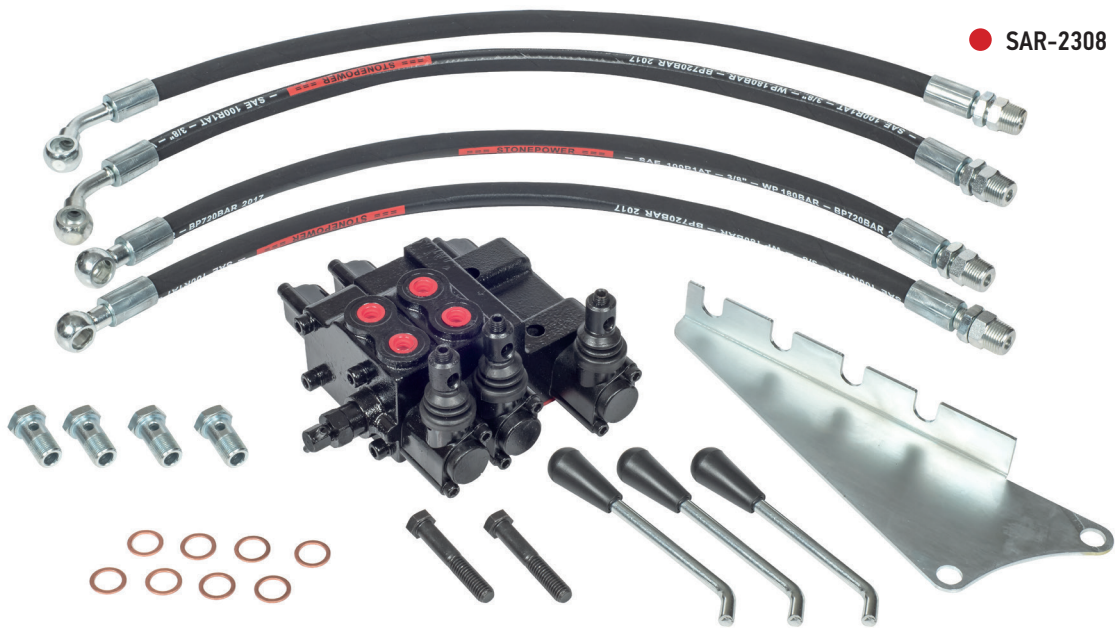
TECHNICAL SPECIFICATIONS			
Stock Code	Product Type	Rakor	Liter (Lt)
FHR-1526	FHR-M-45 1P	3/8"-1/2"	45
SAR-1527	FHR-M-45 2P	3/8"-1/2"	45
SAR-1528	FHR-M-45 3P	3/8"-1/2"	45
SAR-1529	FHR-M-45 4P	3/8"-1/2"	45
SAR-1530	FHR-M-45 5P	3/8"-1/2"	45



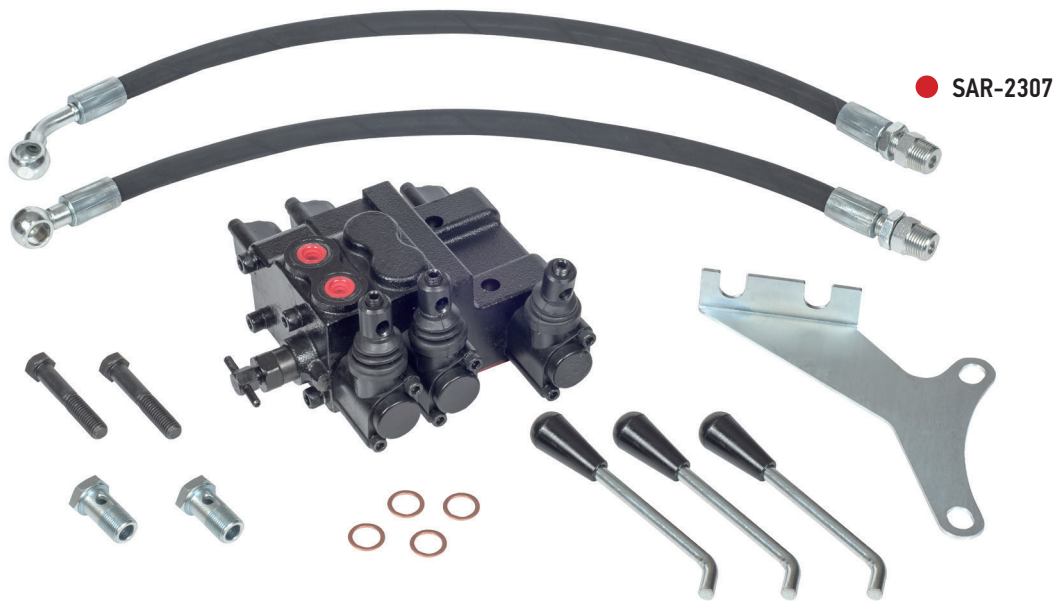
TECHNICAL SPECIFICATIONS			
Stock Code	Product Type	Rakor	Liter (Lt)
SAR-1669	FHR-DMF-1P	M22x1,5	-
SAR-1670	FHR-DMF-2P	M22x1,5	-
SAR-1671	FHR-DMF-3P	M22x1,5	-

SAR-2306

MF-DAMPER VALVES



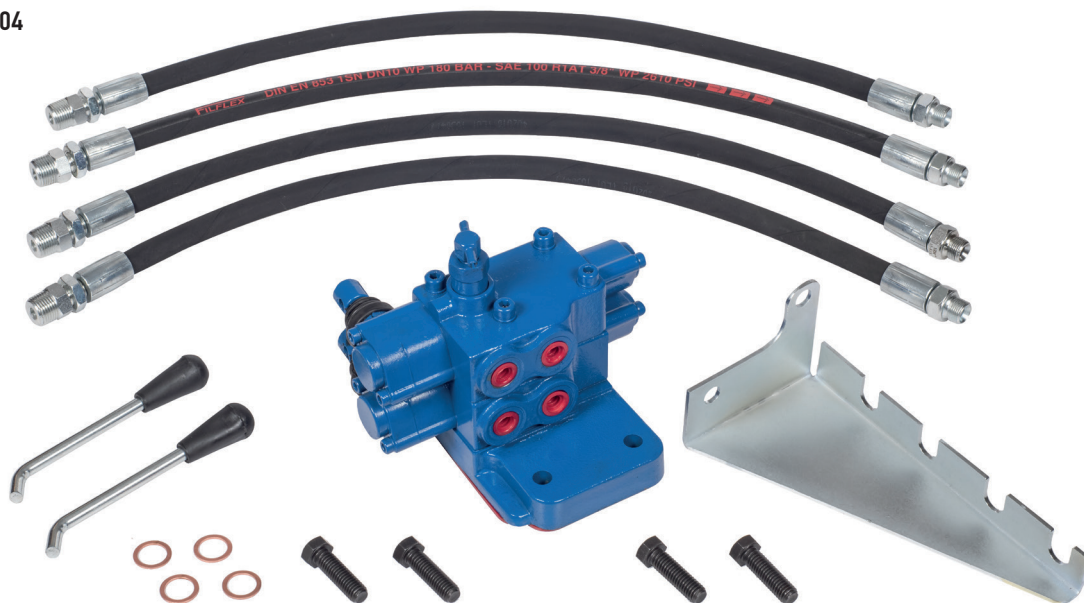
● SAR-2308



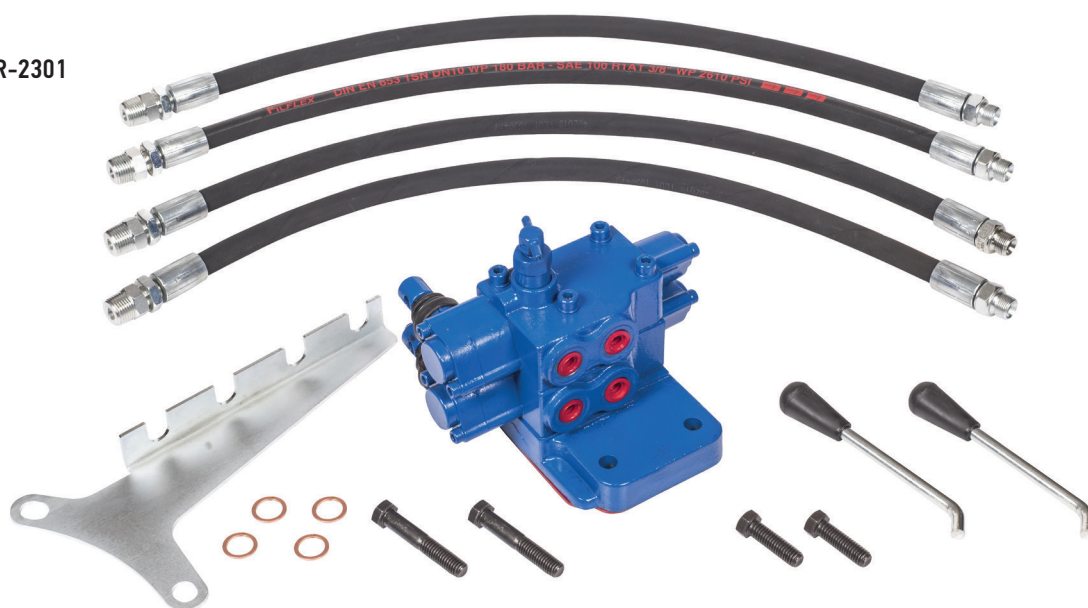
● SAR-2307

TECHNICAL SPECIFICATIONS			
Stock Code	Product Type	Number of Exits	Rakor
SAR-2306	MASSEY FERGUSON	TWO EXIT	3/8
SAR-2307	MASSEY FERGUSON	TWO EXIT + HYDRAULIC	3/8
SAR-2308	MASSEY FERGUSON	FOUR EXIT	3/8
SAR-2309	MASSEY FERGUSON	FOUR EXIT + HYDRAULIC	3/8
SAR-2310	MASSEY FERGUSON	SIX EXIT	3/8

● SAR-2304



● SAR-2301

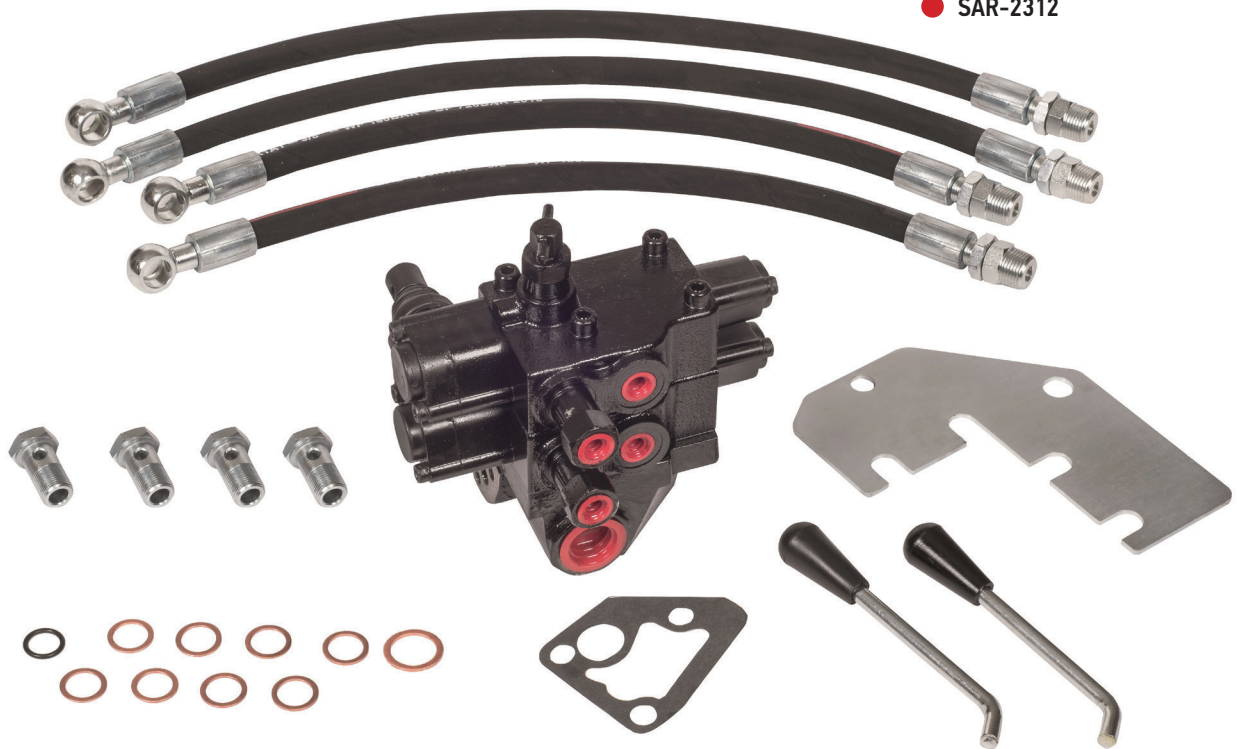


TECHNICAL SPECIFICATIONS

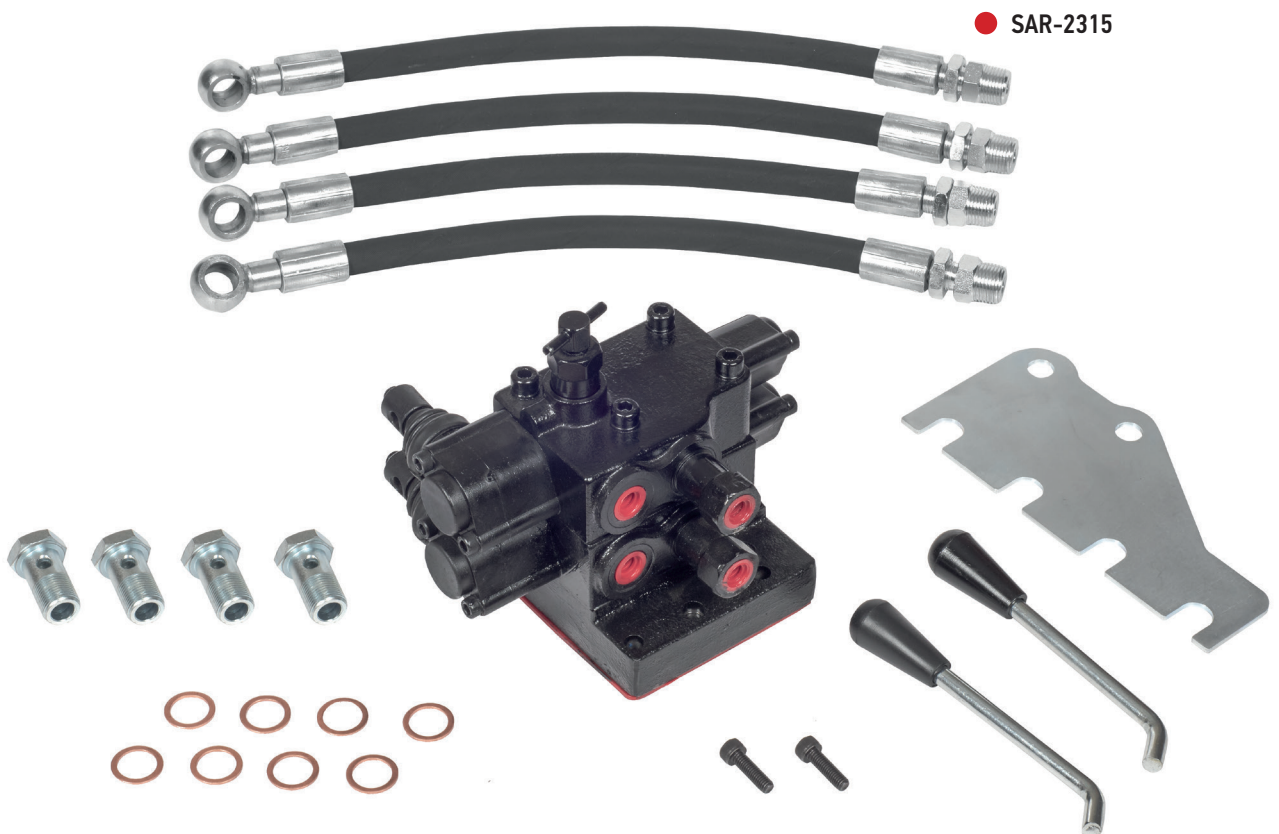
Stock Code	Product Type	Number of Exits	Rakor
SAR-2300	FORD 3000	TWO EXIT	3/8
SAR-2301	FORD 3000	FOUR EXIT	3/8
SAR-2302	FORD 3000	SIX EXIT	3/8
SAR-2303	FORD 5000	TWO EXIT	3/8
SAR-2304	FORD 5000	FOUR EXIT	3/8
SAR-2305	FORD 5000	SIX EXIT	3/8



● SAR-2312



TECHNICAL SPECIFICATIONS			
Stock Code	Product Type	Number of Exits	Rakor
SAR-2311	FIAT	TWO EXIT	3/8
SAR-2312	FIAT	FOUR EXIT	3/8
SAR-2313	FIAT	SIX EXIT	3/8

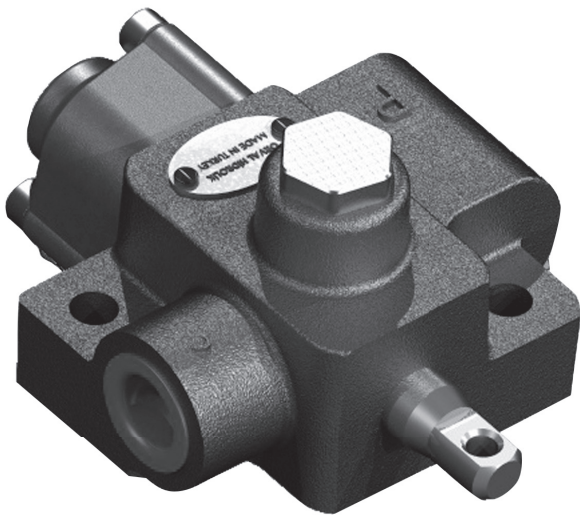


TECHNICAL SPECIFICATIONS			
Stock Code	Product Type	Number of Exits	Rakor
SAR-2314	STEYR	TWO EXIT	3/8
SAR-2315	STEYR	FOUR EXIT	3/8
SAR-2316	STEYR	SIX EXIT	3/8



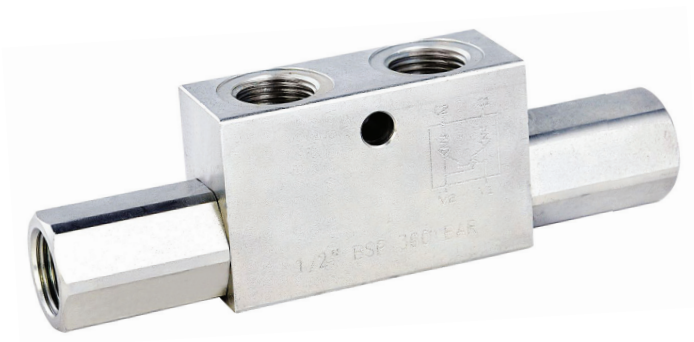
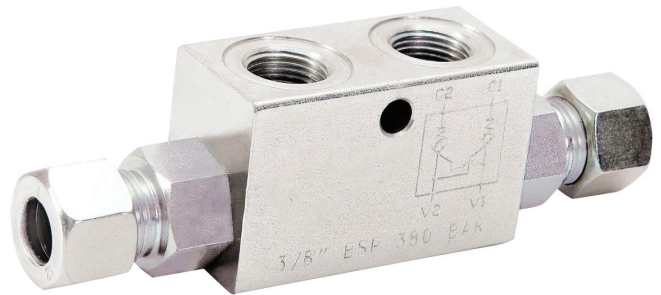
TECHNICAL SPECIFICATIONS

Stock Code	Product Type	Rakor	Liter (Lt)
SAR-1666	FHR-TV-50-1P	18 x 1,50	
SAR-1667	FHR-TV-50-2P	18 x 1,50	
SAR-1668	FHR-TV-50-3P	18 x 1,50	



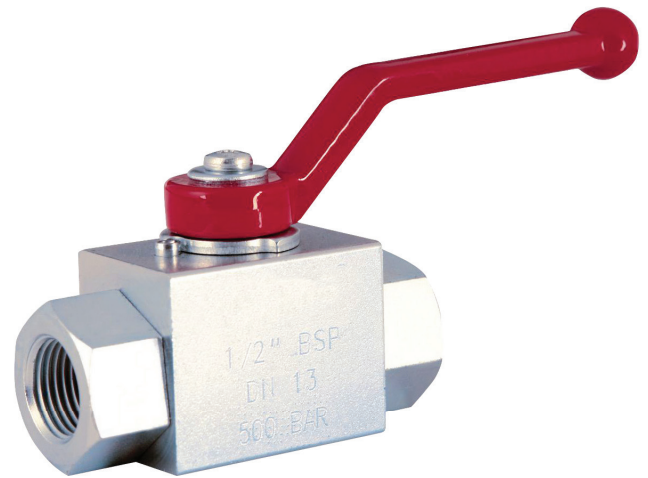
TECHNICAL SPECIFICATIONS

Stock Code	Product Type	Rakor	Liter (Lt)
SAR-1672	FHR-RSV-45 - VALUES	1/2	

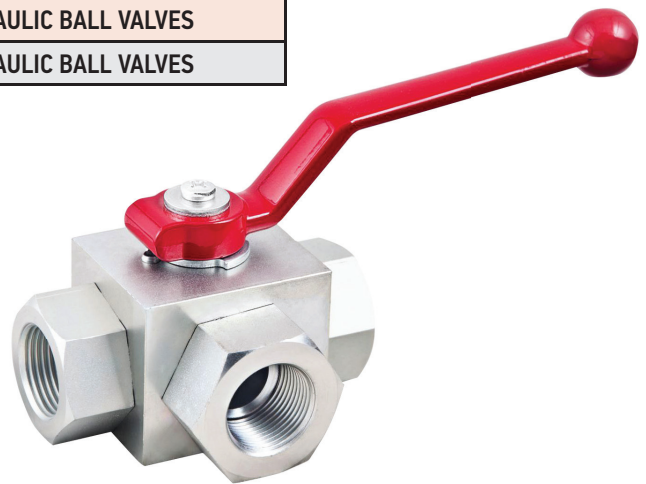


TECHNICAL SPECIFICATIONS

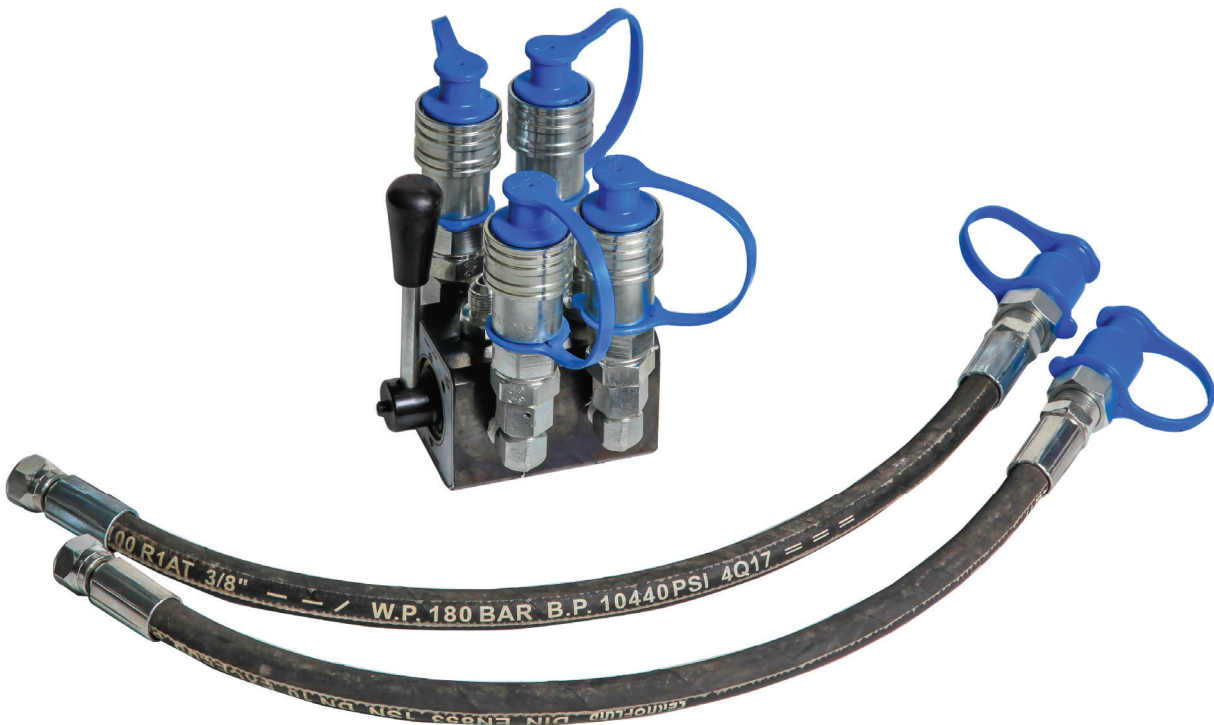
Stock Code	Product Type
SAR-1700	1/4 TWIN LOCK VALVE
SAR-1701	3/8 NO NUT TWIN LOCK VALVE
SAR-1702	1/2 TWIN LOCK VALVE
SAR-1703	3/8 NUT TWIN LOCK VALVE
SAR-1704	1/2 PRESSURE SAFETY VALVE



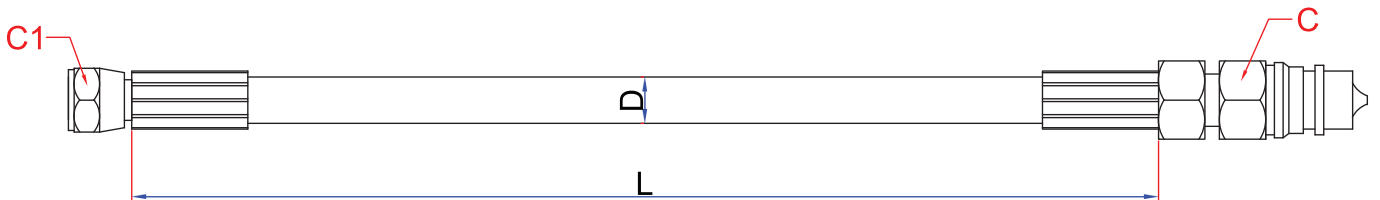
TECHNICAL SPECIFICATIONS	
Stock Code	Product Type
SAR-1705	1/4 HYDRAULIC BALL VALVES
SAR-1706	3/8 HYDRAULIC BALL VALVES
SAR-1707	1/2 HYDRAULIC BALL VALVES
SAR-1708	3/4 HYDRAULIC BALL VALVES
SAR-1709	1" HYDRAULIC BALL VALVES
SAR-1710	1-1/4 HYDRAULIC BALL VALVES
SAR-1711	1-1/2 HYDRAULIC BALL VALVES



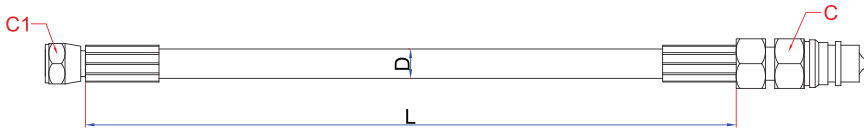
TECHNICAL SPECIFICATIONS	
Stock Code	Product Type
SAR-1712	1/4 HYDRAULIC BALL VALVES
SAR-1713	3/8 HYDRAULIC BALL VALVES
SAR-1714	1/2 HYDRAULIC BALL VALVES
SAR-1715	3/4 HYDRAULIC BALL VALVES
SAR-1716	1" HYDRAULIC BALL VALVES
SAR-1717	1-1/4 HYDRAULIC BALL VALVES
SAR-1718	1-1/2 HYDRAULIC BALL VALVES



TECHNICAL SPECIFICATIONS	
Stock Code	Product Type
SAR-1719	3/8 HYDRAULIC SIX STRAND VALVE-SET
SAR-1720	3/4 HYDRAULIC SIX STRAND VALVE



TECHNICAL SPECIFICATIONS		
Stock Code	Product Type - D	Height L (cm)
SAR-1800	3/8 R1-R2 HOSE	30
SAR-1801	3/8 R1-R2 HOSE	65
SAR-1802	3/8 R1-R2 HOSE	70
SAR-1803	3/8 R1-R2 HOSE	130
SAR-1804	3/8 R1-R2 HOSE	170
SAR-1805	3/8 R1-R2 HOSE	200
SAR-1806	3/8 R1-R2 HOSE	250
SAR-1807	3/8 R1-R2 HOSE	300



TECHNICAL SPECIFICATIONS	
Stock Code	Size L (cm)
SAR-1825	30 CM
SAR-1826	35 CM
SAR-1827	40 CM
SAR-1828	45 CM
SAR-1829	50 CM
SAR-1830	55 CM
SAR-1831	60 CM
SAR-1832	65 CM
SAR-1833	70 CM
SAR-1834	75 CM
SAR-1835	80 CM
SAR-1836	85 CM
SAR-1837	90 CM
SAR-1838	95 CM
SAR-1839	100 CM
SAR-1840	105 CM
SAR-1841	110 CM
SAR-1842	115 CM
SAR-1843	120 CM
SAR-1844	125 CM
SAR-1845	130 CM
SAR-1846	135 CM
SAR-1847	140 CM
SAR-1848	145 CM
SAR-1849	150 CM
SAR-1850	155 CM
SAR-1851	160 CM
SAR-1852	165 CM
SAR-1853	170 CM
SAR-1854	175 CM
SAR-1855	180 CM
SAR-1856	185 CM
SAR-1857	190 CM
SAR-1858	195 CM
SAR-1859	200 CM
SAR-1860	250 CM
SAR-1861	300 CM
SAR-1862	350 CM
SAR-1863	400 CM
SAR-1864	450 CM
SAR-1865	500 CM
SAR-1866	550 CM
SAR-1867	600 CM
SAR-1868	650 CM
SAR-1869	700 CM
SAR-1870	750 CM
SAR-1871	800 CM
SAR-1872	850 CM
SAR-1873	900 CM
SAR-1874	950 CM
SAR-1875	1000 CM



● SAR-2401



● SAR-2400

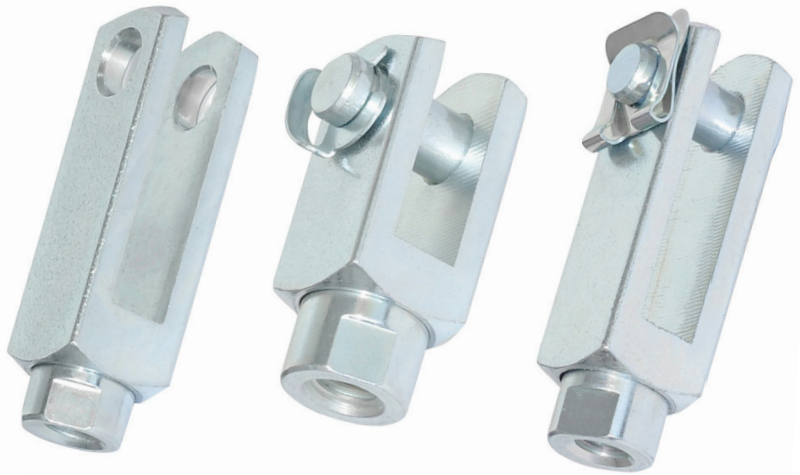


TECHNICAL SPECIFICATIONS

Stock Code	Product Type	OEM
SAR-2400	FIAT 450-480-500-540-580-600-640-55.46-65.46	588771
SAR-2401	MF VFD1104	1860100M95

SAR-1910

HYDRAULIC CONNECTION

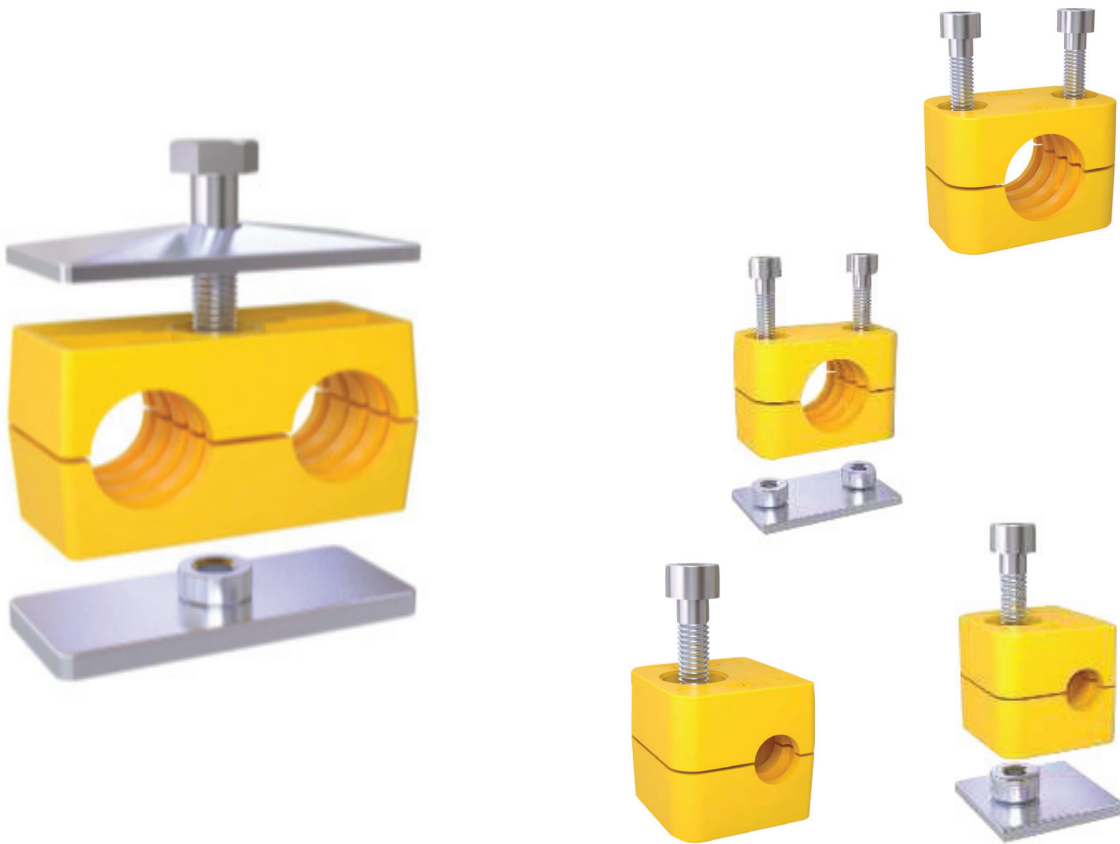


TECHNICAL SPECIFICATIONS	
Stock Code	Product Type
SAR-1910	M8X1.25 CLIP FORK CONNECTION
SAR-1911	M10X1.25 CLIP FORK CONNECTION
SAR-1912	M12X1.25 CLIP FORK CONNECTION
SAR-1913	M16X1.5 CLIP FORK CONNECTION
SAR-1914	M20X1.5 CLIP FORK CONNECTION
SAR-1915	M27X2 CLIP FORK CONNECTION

SAR-1916



TECHNICAL SPECIFICATIONS			
Stock Code	Product Type	Outer Size	Pin Size
SAR-1916	Q 12/16 PISTON JOINT CONNECTION	M6X1.25	6
SAR-1917	Q 20 PISTON JOINT CONNECTION	M8X1.25	8
SAR-1918	Q 25/32 PISTON JOINT CONNECTION	M10X1.25	10
SAR-1919	Q 40 PISTON JOINT CONNECTION	M12X1.25	12
SAR-1920	Q 50 /63 PISTON JOINT CONNECTION	M16X1.5	16
SAR-1921	Q 80/100 PISTON JOINT CONNECTION	M20X1.5	20
SAR-1922	Q 125 PISTON JOINT CONNECTION	M30X2.0	30
SAR-1923	Q 160/200 PISTON JOINT CONNECTION	M35X2.0	35

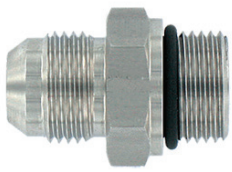


TECHNICAL SPECIFICATIONS

Stock Code	Product Type	Hose Diameter (mm)	Product Type
SAR-1924	PIPE AND HOSE CLAMP	6	SINGLE
SAR-1925	PIPE AND HOSE CLAMP	8	SINGLE
SAR-1926	PIPE AND HOSE CLAMP	10	SINGLE
SAR-1927	PIPE AND HOSE CLAMP	12	SINGLE
SAR-1928	PIPE AND HOSE CLAMP	14	SINGLE
SAR-1929	PIPE AND HOSE CLAMP	16	SINGLE
SAR-1930	PIPE AND HOSE CLAMP	18	SINGLE
SAR-1931	PIPE AND HOSE CLAMP	20	SINGLE
SAR-1932	PIPE AND HOSE CLAMP	25	SINGLE
SAR-1933	PIPE AND HOSE CLAMP	30	SINGLE
SAR-1934	PIPE AND HOSE CLAMP	6	DOUBLE
SAR-1935	PIPE AND HOSE CLAMP	8	DOUBLE
SAR-1936	PIPE AND HOSE CLAMP	10	DOUBLE
SAR-1937	PIPE AND HOSE CLAMP	12	DOUBLE
SAR-1938	PIPE AND HOSE CLAMP	14	DOUBLE
SAR-1939	PIPE AND HOSE CLAMP	16	DOUBLE
SAR-1940	PIPE AND HOSE CLAMP	18	DOUBLE
SAR-1941	PIPE AND HOSE CLAMP	20	DOUBLE
SAR-1942	PIPE AND HOSE CLAMP	25	DOUBLE
SAR-1943	PIPE AND HOSE CLAMP	30	DOUBLE

SAR-1808

RAKOR VE STAMP



TECHNICAL SPECIFICATIONS

Stock Code	Product Type
SAR-1808	1/2 FEMALE JAK
SAR-1809	1/2 MALE JAK
SAR-1810	1/2 VALVE
SAR-1811	3/8-5/8 NIPPLE
SAR-1812	3/8-1/4 NIPPLE
SAR-1813	1/2-3/4 NIPPLE
SAR-1814	1/2-5/8 NIPPLE
SAR-1815	3/8-M18 NIPPLE

FHR-1816



TECHNICAL SPECIFICATIONS

Stock Code	Product Type
SAR-1816	1/8" COPPER STAMP
SAR-1817	1/4" COPPER STAMP
SAR-1818	3/8" COPPER STAMP
SAR-1819	1/2" COPPER STAMP
SAR-1820	3/4" COPPER STAMP
SAR-1821	1" COPPER STAMP
SAR-1822	1-1/4" COPPER STAMP
SAR-1823	1-1/2 R" COPPER STAMP
SAR-1824	2"R" COPPER STAMP



TECHNICAL SPECIFICATIONS	
Stock Code	Product Type
SAR-1900	25 CC PUMP TYPE HAND PUMP
SAR-1901	25 CC SINGLE EFFECT HAND PUMP
SAR-1902	25 CC DOUBLE EFFECT HAND PUMP
SAR-1903	45 CC SINGLE EFFECT HAND PUMP
SAR-1904	45 CC DOUBLE EFFECT HAND PUMP



TECHNICAL SPECIFICATIONS	
Stock Code	Product Type
SAR-1905	ALUMINUM STORE 1LT.
SAR-1906	ALUMINUM STORE 2LT.
SAR-1907	ALUMINUM STORE 3LT.
SAR-1908	ALUMINUM STORE 4LT.
SAR-1909	ALUMINUM STORE 5LT.



TECHNICAL SPECIFICATIONS		
Stock Code	Volt	Product Type
DZY 12K	12 VOLT	PIPE TYPE SMALL SUBMERSIBLE PUMP
DZY 24K	24 VOLT	PIPE TYPE SMALL SUBMERSIBLE PUMP
DZY 12B	12 VOLT	PIPE TYPE BIG PUMP
DZY 24B	24 VOLT	PIPE TYPE BIG PUMP
DZY 12A	12 VOLT	3/4 PULL OUTSIDE ALM. BODY POMP
DZY 24A	24 VOLT	3/4 PULL OUTSIDE ALM. BODY POMP
DZY 220D	220 VOLT	3/4 PULL OUTSIDE POMP
DZY 12-1"	12 VOLT	1" EXIT PULL OUTSIDE POMP
DZY 24-1"	24 VOLT	1" EXIT PULL OUTSIDE POMP

TRACTOR COMPRESSORS

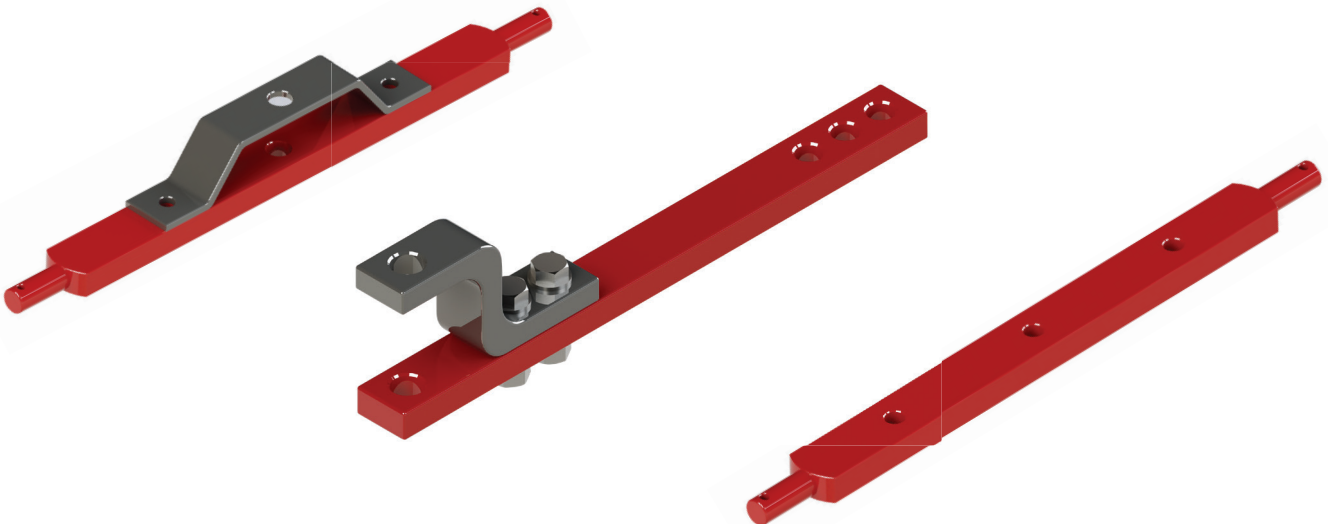
SAR-4600



TECHNICAL SPECIFICATIONS	
Stock Code	Product Type
FHR-4600	TRACTOR AIR COMPRESSOR (YAZAN)
FHR-4601	TRACTOR AIR COMPRESSOR (FÜHRER)

TRACTOR DRAW BARS

SAR-4700



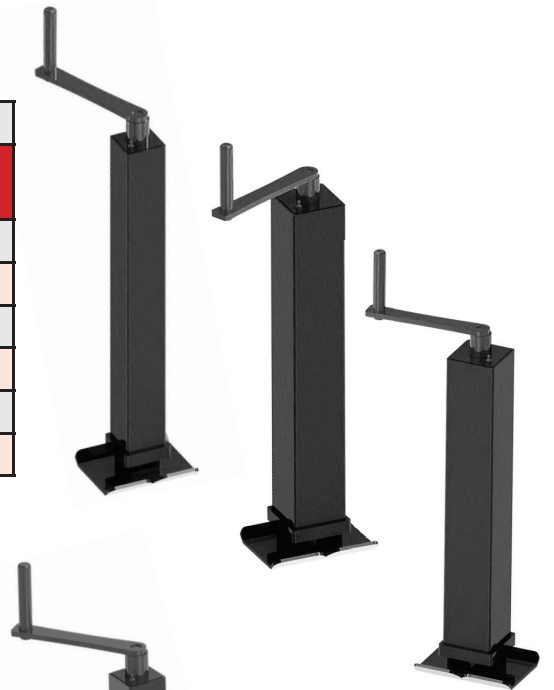
TECHNICAL SPECIFICATIONS				
Stock Code	Product Type	Lama Thicknes (mm)	Lama Lenght (mm)	Lama Height (mm)
FHR-4700	PULL ARROW	30	60	750
FHR-4701	BRIDGE NINE HOLE	30	60	750
FHR-4702	STRAIGHT NINE HOLE	30	60	750



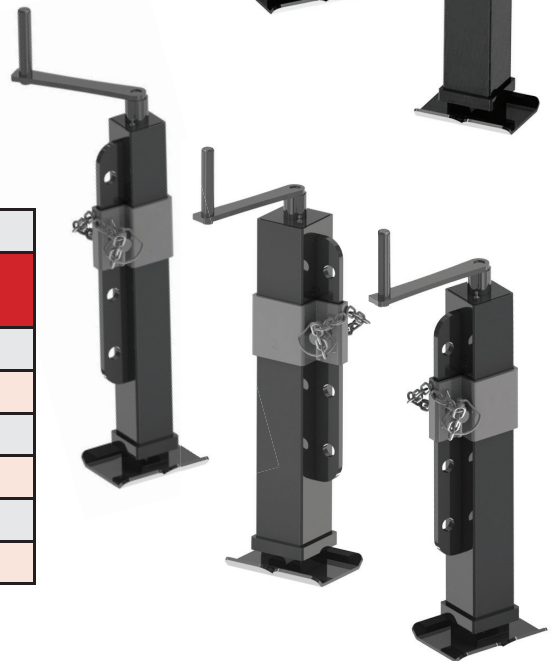
TECHNICAL SPECIFICATIONS	
Stock Code	Product Type
SAR-4703	SIDE LINK HANDLE
SAR-4704	SIDE LINK HANDLE WITH CHAIN
SAR-4705	TRACTOR TAIL SHAFT MILLING TIP



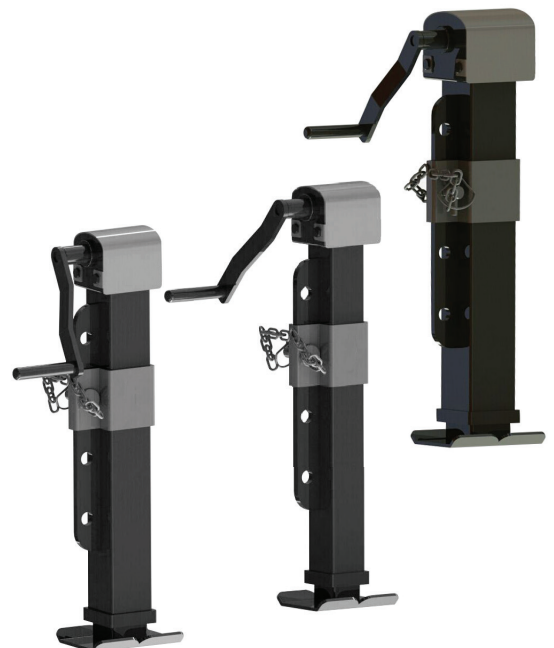
TECHNICAL SPECIFICATIONS			
Stock Code	Model	Product	Weight (kg)
SAR-2200	STANDART JACK	60X60	2000
SAR-2201	EKO- STANDART JACK	60X60	2000
SAR-3000	STANDART JACK	70X70	3000
SAR-3001	EKO- STANDART JACK	70X70	3000
SAR-4000	STANDART JACK	80X80	4000
SAR-4001	EKO- STANDART JACK	80X80	4000

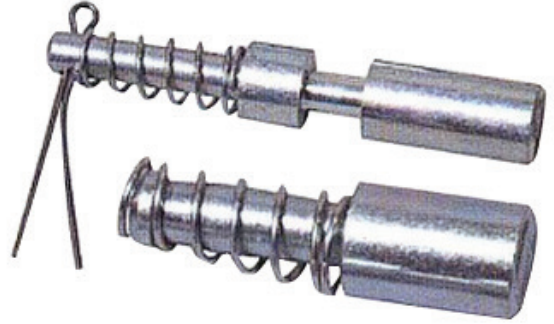
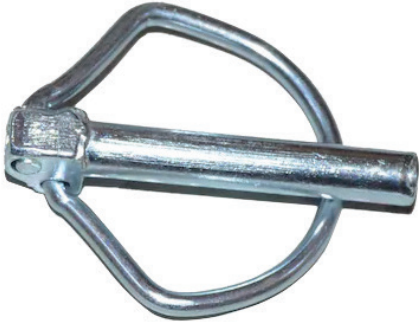


TECHNICAL SPECIFICATIONS			
Stock Code	Model	Product	Weight (kg)
SAR-2001	ADJUSTABLE JACK	60X60	2000
SAR-2002	EKO- ADJUSTABLE JACK	60X60	2000
SAR-3101	ADJUSTABLE JACK	70X70	3000
SAR-3102	EKO- ADJUSTABLE JACK	70X70	3000
SAR-4101	ADJUSTABLE JACK	80X80	4000
SAR-4102	EKO- ADJUSTABLE JACK	80X80	4000



TECHNICAL SPECIFICATIONS			
Stock Code	Model	Product	Weight (kg)
SAR-2003	JACK WITH GEAR	60X60	2000
SAR-3003	JACK WITH GEAR	70X70	3000
SAR-4002	JACK WITH GEAR	80X80	5000





TECHNICAL SPECIFICATIONS

Stock Code	Product Type	Size (mm)
SAR - 4197	SPRING PIN	6 MM
SAR - 4198	SPRING PIN	8 MM
SAR - 4199	SPRING PIN	10 MM
SAR - 4200	SPRING PIN	11 MM GOLD
SAR - 4201	SPRING PIN	12 MM GOLD
SAR - 4202	SPRING PIN	14 MM GOLD
SAR - 4203	SPRING PIN	16 MM GOLD
SAR - 4204	SHAFT PIN	12 MM UZUN
SAR - 4205	CEMENTED SHAFT PIN	12 MM UZUN
SAR - 4206	SHAFT PIN	13 MM KISA
SAR - 4207	SHAFT PIN	13 MM UZUN
SAR - 4208	CEMENTED SHAFT PIN	13 MM KISA
SAR - 4209	CEMENTED SHAFT PIN	13 MM UZUN
SAR - 4210	SHAFT PIN	14 MM KISA
SAR - 4211	SHAFT PIN	14 MM UZUN
SAR - 4212	CEMENTED SHAFT PIN	14 MM KISA
SAR-4213	CEMENTED SHAFT PIN	14 MM UZUN

TECHNICAL SPECIFICATIONS	
Stock Code	Product Type
SAR-01-01	19X125 MM SIDE ARM PIN
SAR-01-02	22X125 MM SIDE ARM PIN
SAR-01-03	25X125 MM SIDE ARM PIN
SAR-01-04	28X125 MM SIDE ARM PIN
SAR-01-05	19X125 MM CHAIN PIN
SAR-01-06	22X125 MM CHAIN PIN
SAR-01-07	25X125 MM CHAIN PIN
SAR-01-08	28X125 MM CHAIN PIN
SAR-01-17	25X150 MM CHAIN PIN
SAR-01-09	19X150 MM SIDE ARM PIN
SAR-01-10	22X150 MM SIDE ARM PIN
SAR-01-11	25X150 MM SIDE ARM PIN
SAR-01-12	19X250 MM KIRMASIZ PİM
SAR-01-13	19X170 MM SIDE ARM PIN
SAR-01-14	22X170 MM SIDE ARM PIN
SAR-01-15	22X190 MM SIDE ARM PIN
SAR-01-16	22X220 MM SIDE ARM PIN



TECHNICAL SPECIFICATIONS	
Stock Code	Product Type
SAR-02-01	25X180 MM TRAILER HITCH PIN
SAR-02-01-01	25X200 MM TRAILER HITCH PIN
SAR-02-02	28X180 MM TRAILER HITCH PIN
SAR-02-02-01	28X200 MM TRAILER HITCH PIN
SAR-02-03	30X180 MM TRAILER HITCH PIN
SAR-02-04	32X180 MM TRAILER HITCH PIN
SAR-02-05	34X180 MM TRAILER HITCH PIN
SAR-02-06	36X180 MM TRAILER HITCH PIN
SAR-02-07	25X250 MM TRAILER HITCH PIN
SAR-02-08	28X250 MM TRAILER HITCH PIN
SAR-02-09	30X250 MM TRAILER HITCH PIN
SAR-02-10	32X250 MM TRAILER HITCH PIN
SAR-02-18	19X180 MM TRAILER HITCH CHAIN PIN
SAR-02-11	22X180 MM TRAILER HITCH CHAIN PIN
SAR-02-12	25X180 MM TRAILER HITCH CHAIN PIN
SAR-02-13	28X180 MM TRAILER HITCH CHAIN PIN
SAR-02-14	30X180 MM TRAILER HITCH CHAIN PIN
SAR-02-15	32X180 MM TRAILER HITCH CHAIN PIN
SAR-02-16	34X180 MM TRAILER HITCH CHAIN PIN
SAR-02-17	36X180 MM TRAILER HITCH CHAIN PIN



TECHNICAL SPECIFICATIONS

Stock Code	Product Type
SAR-05-01	28*28 PLOW TILLER PIN (WITHOUT NUT)
SAR-05-02	25*28 PLOW TILLER PIN (WITHOUT NUT)
SAR-05-03	22*28 PLOW TILLER PIN (WITHOUT NUT)
SAR-05-04	25*22 PLOW TILLER PIN (WITHOUT NUT)
SAR-05-05	25*25 PLOW TILLER PIN (WITHOUT NUT)
SAR-05-06	22*22 PLOW TILLER PIN (WITHOUT NUT)
SAR-05-07	25*28 CROWBAR TILLER PIN (WITHOUT NUT)
SAR-05-08	28*28 CROWBAR TILLER PIN (WITHOUT NUT)
SAR-05-09	22*19 MM (5/8) MINI TILLER PIN SMALL TYPE
SAR-05-10	22*19 MM (3/4) MINI TILLER PIN BIG TYPE



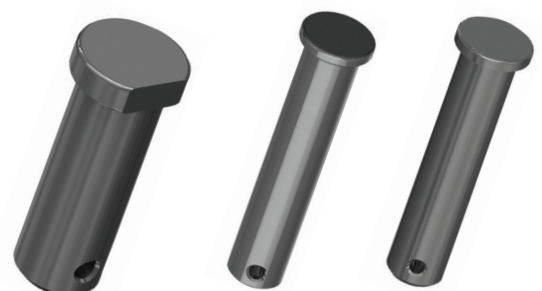
TECHNICAL SPECIFICATIONS

Stock Code	Product Type
SAR-07-01	12X45 MM RAKE PIN (BEND NECK)
SAR-07-02	16X70 MM RAKE PIN (BEND NECK)
SAR-07-03	16X90 MM RAKE PIN (BEND NECK)
SAR-07-04	19X110 MM RAKE PIN (BEND NECK)



TECHNICAL SPECIFICATIONS

Stock Code	Product Type
RFS-06-01	MF 135 16 MM*90 MM MF SLING ARM PIN THIN
RFS-06-02	MF 165 19 MM*90 MM MF SLING ARM PIN MEDIUM
RFS-06-03	MF 285 22 MM*90 MM MF SLING ARM PIN THICK
RFS-06-04	22X65 MM FIAT SLING ARM PIN 480-640 THIN
RFS-06-05	25X65 MM MF SLING ARM PIN 480-640 MEDIUM





TECHNICAL SPECIFICATIONS	
Stock Code	Product Type
SAR-04-01	640 OLD MODEL CAP HYDRAULIC ARM PIN
SAR-04-02	480 MODEL CAP HYDRAULIC ARM PIN
SAR-04-04	640 LAST MODEL 65/46 BODY PIN
SAR-04-05	480 LAST MODEL 55/46 BODY PIN
SAR-04-06	640 NEW MODEL HYDRAULIC ARM PIN
SAR-04-07	480 NEW MODEL HYDRAULIC ARM PIN
SAR-04-03	70/56 BODY PIN
SAR-04-09	MF 285 BOTTOM PIN



TECHNICAL SPECIFICATIONS	
Stock Code	Product Type
SAR-03-01	19X220 MM MF BOTTOM HITCH EAR PIN
SAR-03-02	19X250 MM MF BOTTOM HITCH EAR PIN
SAR-03-03	19X300 MM MF BOTTOM HITCH EAR PIN
SAR-03-04	19X350 MM MF BOTTOM HITCH EAR PIN
SAR-03-05	FIAT SIDE LINK (SEMER) PIN WITH LAMA



Büsan OSB. Fevzi Çakmak Mh. 10670 Sk.
No:28/A Karatay/KONYA/TURKEY
+90 332 248 12 72
+90 332 249 82 26
www.saragri.com
info@saragri.com
export@saragri.com